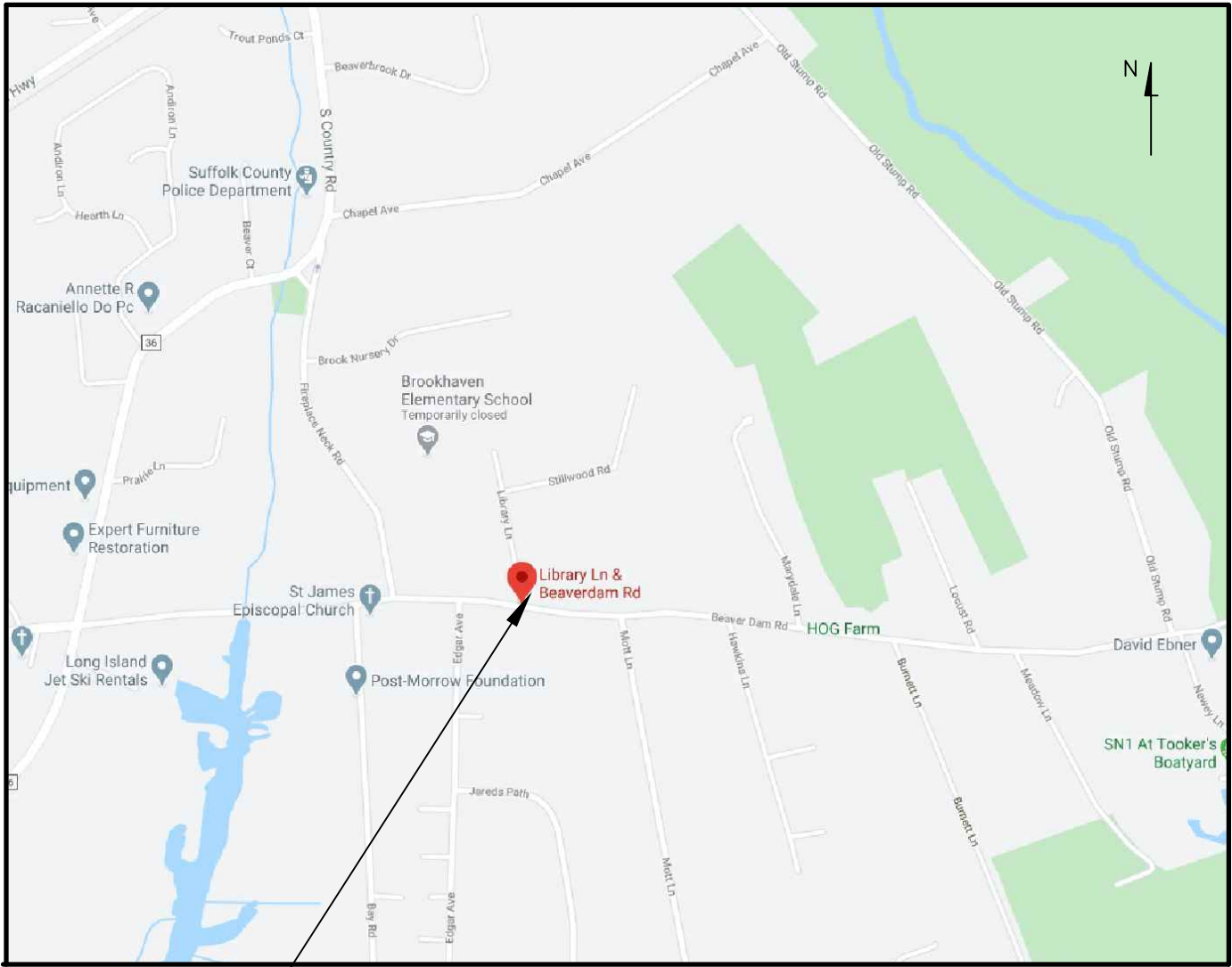


SITE IMPROVEMENTS
FOR
BROOKHAVEN FREE LIBRARY
273 BEAVER DAM ROAD
TOWN OF BROOKHAVEN
SUFFOLK COUNTY, NEW YORK 11719
MARCH 2021

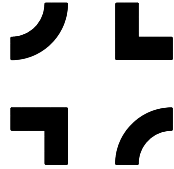


PROJECT LOCATION
KEY MAP
NOT TO SCALE

INDEX

SHEET	DRAWING No.	DESCRIPTION
1	C - 1	COVER SHEET
2 - 3	MD - 1 THRU 2	MISCELLANEOUS DETAILS
4 - 7	RD - 1 THRU 4	SIDEWALK RAMP DETAILS
8	EC - 1	EXISTING CONDITIONS PLAN
9	CP - 1	CONSTRUCTION PLAN
10	DP - 1	DRAINAGE PLAN
11	GP - 1	GRADING PLAN
12	PMP - 1	PAVEMENT MARKING PLAN
13	LLP - 1	LANDSCAPE AND LIGHTING PLAN

REVISED CONSTRUCTION DOCUMENTS

CONSULTANT:
**NELSON + POPE**
engineers • architects • surveyors
70 Maxess Road, Melville, NY 11747 • 631.427.5665 • nelsonpoppe.com

CLIENT:
BROOKHAVEN FREE LIBRARY
273 BEAVER DAM ROAD
BROOKHAVEN, NEW YORK 11719

DWN. BY: JM
CHK'D BY: JD
DATE: MARCH 2021
JOB No.: 18311
CADD: 18311_COV
SCALE: NTS

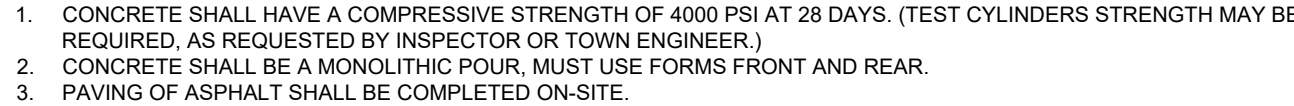
DRAWING NUMBER:
C - 1

3	5-1-2023	REVISED PER HW COMMENT	ZT/JD
2	11-1-2022	REVISIONS PER TOWN ZBA, PLANNING & HIGHWAY REVIEW/APPROVAL	JD
1	3-9-2022	UPDATED AS PER TOWN PLANNING COMMENTS	KWH
No.	DATE	REVISION	BY:

SHEET: 1 OF 13



1. ALL DRAINAGE PIPES MUST BE PROVIDED WITH A MINIMUM 2'-0" OF COVER.
2. THE TOP SECTION SHALL BE LEACHING TYPE WITH GEOTEXTILE FILTER CLOTH INSTALLED. AOS 095 SHALL BE 0.52mm OR GREATER IN ACCORDANCE WITH ASTM D4751.
3. SANITARY RINGS MAY NOT BE USED.
4. MINIMUM 28 DAY COMPRESSIVE STRENGTH OF 4,000 PSI CONCRETE PRIOR TO INSTALLATION.
5. ALL STRUCTURES MUST BE MANUFACTURED AT AN ACI CERTIFIED PLANT, A COPY OF CERTIFICATION MUST BE ON FILE WITH THE TOWN.



NOT TO SCALE



1. CONTROL JOINTS ARE TO BE PLACED EVERY 5'-0" AND EXPANSION JOINTS ARE TO BE PLACED EVERY 20', OR AS DIRECTED BY THE ENGINEER.
2. ALL SIDEWALK RAMPS SHALL BE CONSTRUCTED 6" THICK.
3. ADJACENT RESTORATION SHALL BE PERFORMED TWO FEET (2') FROM THE BACKSIDE OF THE NEWLY PLACED SIDEWALK. TWO FEET (2') OF RESTORATION SHALL BE PERFORMED ON THE FRONTSIDE OF THE SIDEWALK AS WELL, ONLY WHEN NECESSARY.
4. THE CONTRACTOR SHALL COORDINATE WITH THE LIBRARY'S DESIGNATED REPRESENTATIVE TO DETERMINE THE EXACT COLOR OF THE CONCRETE TO BE USED/PLACED IN AREAS SUCH AS CURB RAMPS.
5. CONCRETE SIDEWALK SHALL BE A MONOLITHIC POUR AND HAVE A COMPRESSIVE STRENGTH OF 4000 PSI AT 28 DAYS. (TEST CYLINDERS STRENGTH MAY BE REQUIRED, AS REQUESTED BY INSPECTOR OR TOWN ENGINEER.)



1. THE PAVER COLOR AND PATTERN SHALL MATCH THE SPECIFICATIONS OF THIS CONTRACT, WHICH REVIEW AND APPROVAL BY THE LIBRARY'S DESIGNATED REPRESENTATIVE PRIOR TO PLACEMENT OF ORDER AND/OR INSTALLATION.
2. THE CONTRACTOR SHALL MORTAR ALL SOLDIER PAVERS, EDGE BLOCK IN-PLACE ON THE CONCRETE BASE.
3. CONCRETE BASE SHALL BE PLACED TO PROVIDE A LEVEL FINISHED SURFACE FOR THE PLACEMENT OF CONCRETE PAVERS.

DRAWING NUMBER

MD - 1

SHEET: 2 OF 13

Dover LED | 55021CDBZ



PRODUCT DESCRIPTION



MEASUREMENTS

DIMENSION : 9.25" L x 9.25" W x 21" H

HANGING WEIGHT : 5.7 lb

LAMPING

INPUT VOLTAGE : 120V

LUMENS : 840 Rated

BULB INCLUDED : 1 x 12W LED PCB Integrated, 12W Total

DIMMABLE : (Integrated)

CRI : 80+ CRI

COLOR_TEMP : 3000K

FINISHES OPTION

 Bronze

 Glass

 Seedy CD

 Aluminum

RATINGS

cETLus

Wet Location

DARKSKY

ADDITIONAL

OPERATING TEMPERATURE: -20°C (-4°F), 40°C (104°F)

PHOTOMETRIC: Report Found Online

Always consult a qualified electrician before installing any lighting product.

MAXIM LIGHTING

WESTERN DISTRIBUTION CENTER (HEADQUARTERS)


253 NORTH VINELAND AVE | CITY OF INDUSTRY, CA 91746

EASTERN DISTRIBUTION CENTER

4205 SHIRLEY DR | ATLANTA, GA 30336

P: 626.956.4200 | F: 626.956.4225 | maximlighting.com

Decorative Poles



	Salem	San Antonio	Southport	Wadsworth	Winter Park
Series	SMA - Aluminum	SAC - Iron	SPA - Aluminum	WDA - Aluminum	WPC - Iron
Base Pattern (D=Diamond) (S=Square)	09S, 13S	19D	11S	17D, 17S, 19D, 19S	18D, 20D
SlotLink	6'-22"	-	-	8'-22"	-
Fluted	6'-16"	12'	6'-16"	8'-16"	-
Smooth	6'-16"	-	6'-16"	8'-16"	-
Tapered	8'-16"	-	6'-16"	8'-16"	-
Octagonal	-	-	-	-	11'-12"
Standard Bolted	Aluminum	-	-	Aluminum	-
LED Bolted	-	-	-	Aluminum	-

Hallbrook "All-in-One" Family

Series	HLBK
Material	Aluminum
Bolt Pattern	10S
Clamshell	22"
Single Fixture	Yes
Twirl Fixture	Yes
1.5" NPT Mounting	Yes
OSM Mounting	Yes
Height	10' - 20'

DECORATIVE LIGHT AND POST

ITEM 11B

NOT TO SCALE



1" CHAMFER

ANCHOR BOLT AND NUT AS RECOMMENDED BY POLE MANUFACTURER

RMC CONDUIT SWEEP. REFER TO CONDUIT DETAIL FOR COVER REQUIREMENTS. REFER TO PLAN FOR NUMBER AND FOR SIZING.

RNC LIGHTING BRANCH CIRCUIT CONDUIT, TYP.

COUPLING, TYP.

6 #4 VERTICAL REBAR #3 HOOPS @12" O.C. MAINTAIN 3" MIN COVER, TYP.

UNDISTURBED EARTH, OR COMPACTED SELECT BACKFILL

2" SQ.

3" x 8" COPPER CLAD GROUND ROD, EXTEND TO 10' BELOW GRADE.

REMOVE & REPLACE IN-KIND

3"

4'-0"

LIGHT POLE FOUNDATION
ITEM 11B
NOT TO SCALE

LIGHT POLE NOTES:

- CONCRETE SHALL BE 3,000 PSI AT 28 DAYS.
- REBAR SHALL BE GRADE 60.
- ANCHOR BOLT YIELD STRENGTH SHALL BE 55 KSI PER AASHTO M314.



TRENCH & CULVERT EXCAV.

REMOVE & REPLACE IN-KIND

DETECTABLE WARNING TAPE

BACKFILL

1 1/2" PLASTIC ELECTRICAL CONDUIT

COMPACTED OR UNDISTURBED SOIL

18" MIN.

12"

ELECTRICAL TRENCH
NOT TO SCALE



PROPOSED CONCRETE CURB ITEM 1

SEE FULL DEPTH ASPHALT PAVEMENT RESTORATION DETAIL

ENGINEERED SOILS CONSISTING OF SAND/COMPOST ITEM 8B

WIDTH VARIES (SEE DWG No. LLP - 1)

UNCLASSIFIED EXCAVATION ITEM 4B

GRASS AREA (SEE DWG No. LLP - 1)

6" TO 12" FREEBOARD

2'-6" DEPTH OF ENGINEERED MEDIA

BIO-SWALE
SECTION A-A
NOT TO SCALE



PROPOSED FLUSH CONCRETE CURB ITEM 1

DRAINAGE CATCH-BASIN W/ FLUSH GRATE

ENGINEERED SOIL MEDIA

WIDTH VARIES (SEE DWG No. LLP - 1)

6" TO 12" FREEBOARD

2'-6" DEPTH OF ENGINEERED MEDIA

BIO-SWALE
SECTION B-B
NOT TO SCALE



RAIN GUARDIAN TURRET ITEM 5C

GRATE

SLOPED CONCRETE CURB APRON

PROPOSED CONCRETE CURB ITEM 1

WIDTH VARIES (SEE DWG No. LLP - 1)

CLASS 5 AGGREGATE

RAIN GUARDIAN CONCRETE BASE

ENGINEERED SOIL MEDIA

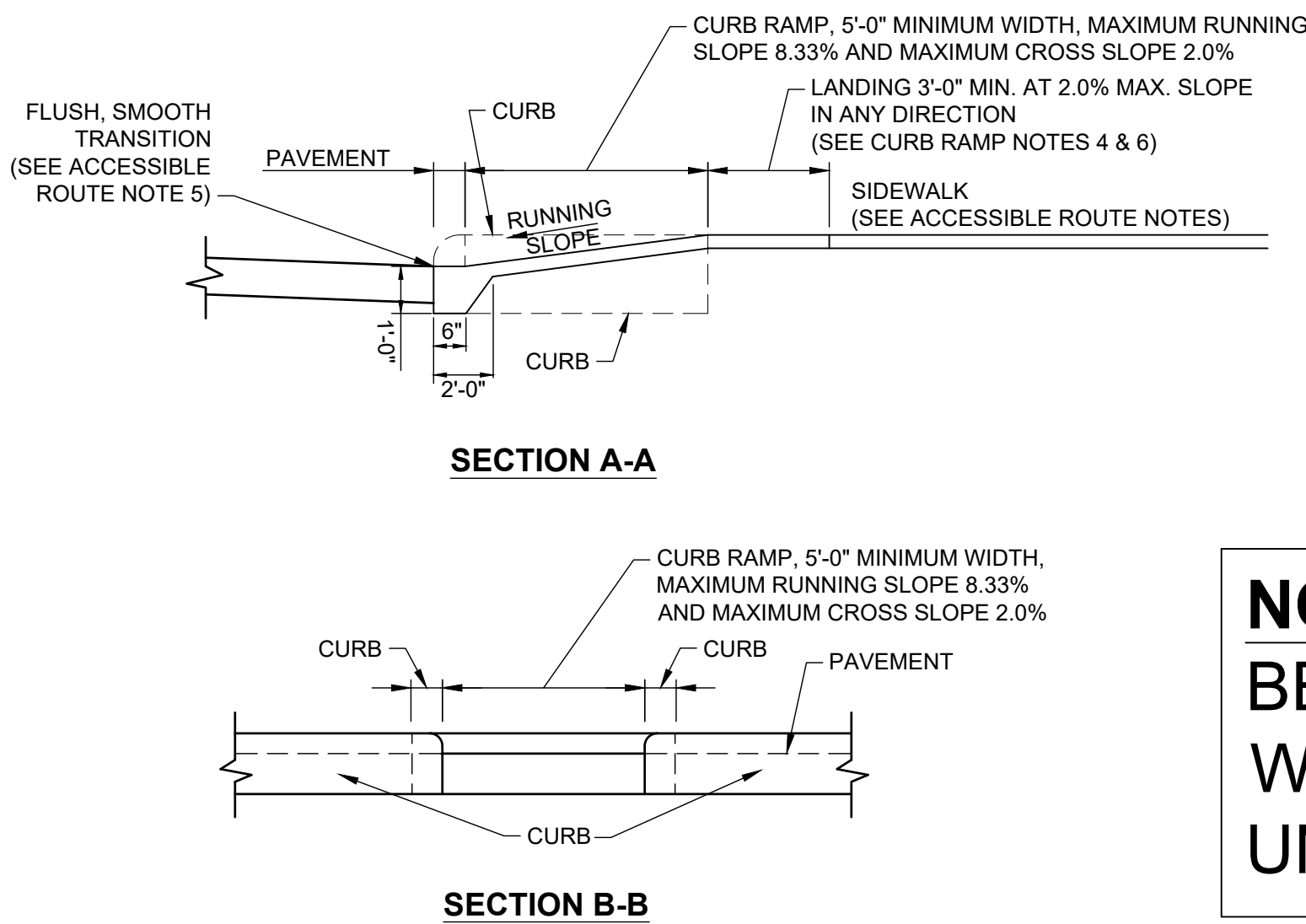
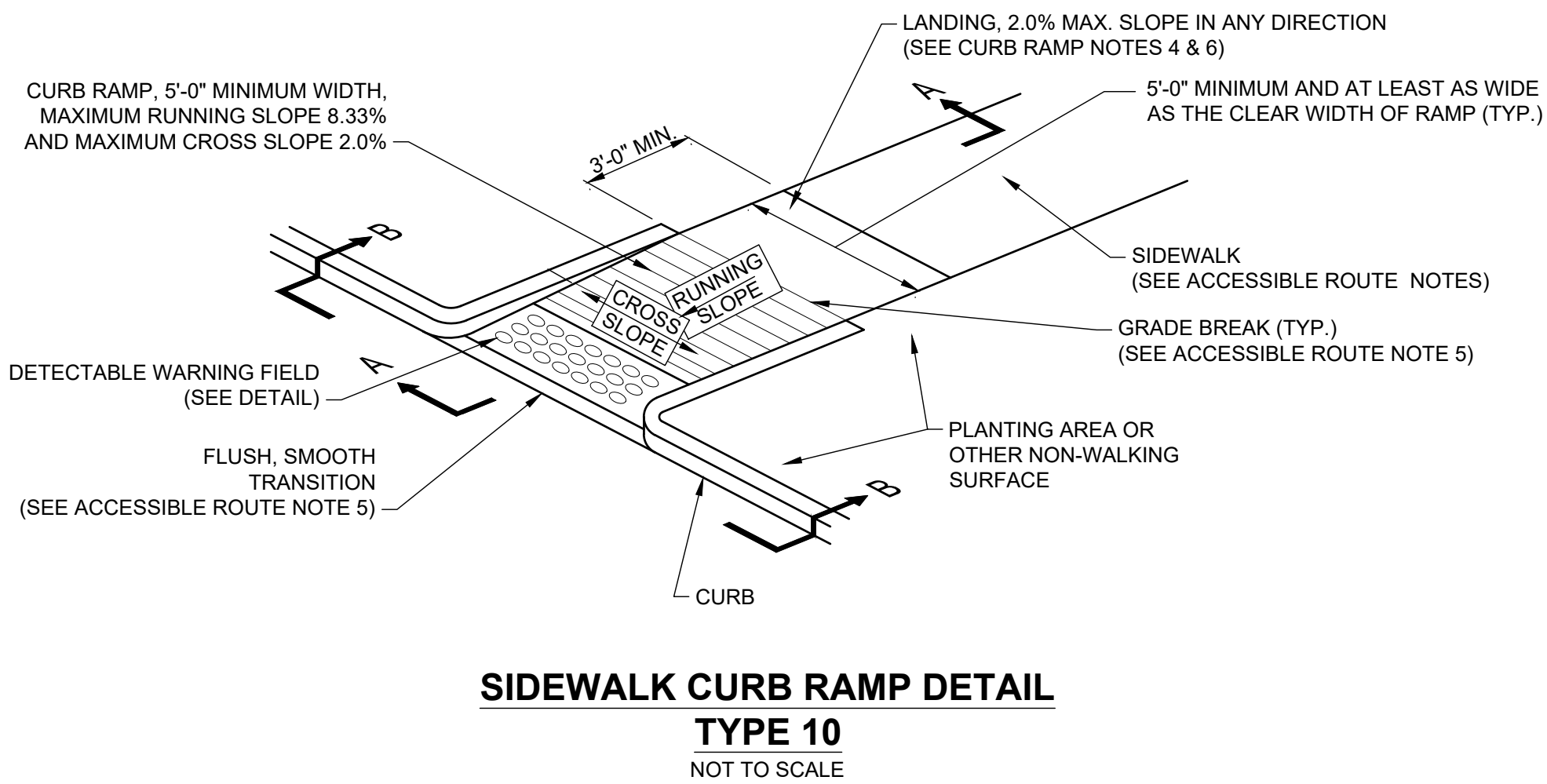
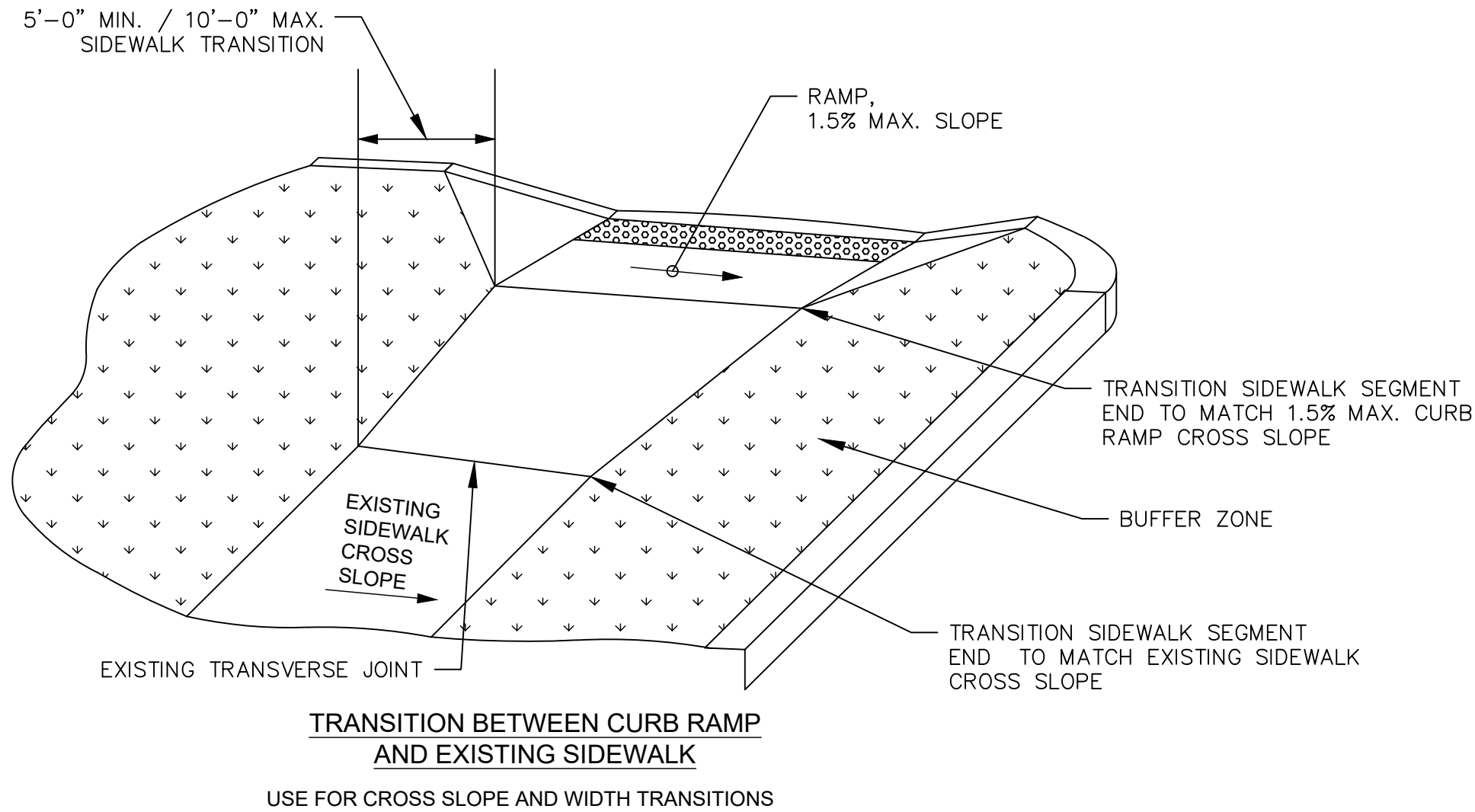
6" TO 12" FREEBOARD

2'-6" DEPTH OF ENGINEERED MEDIA

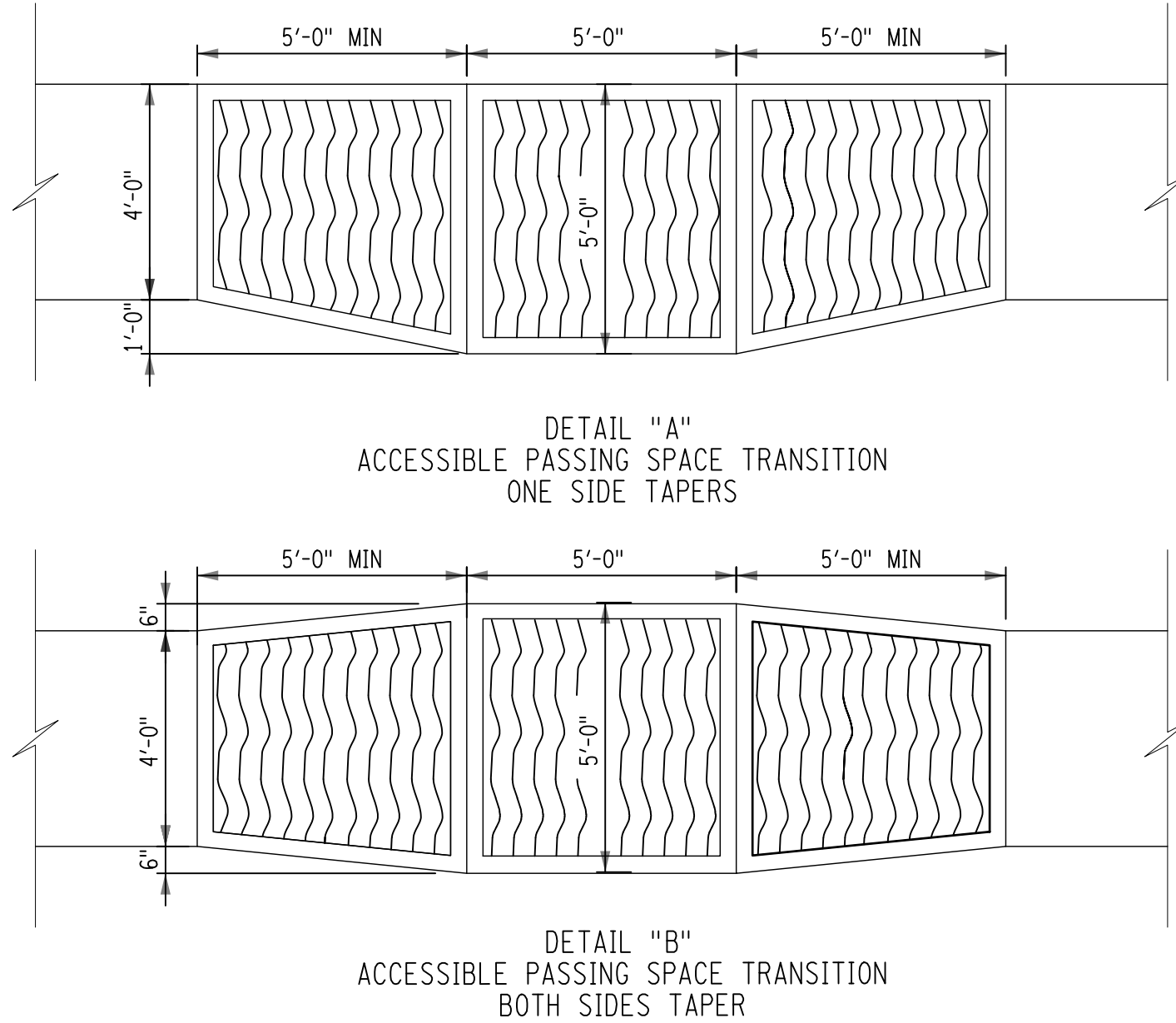
BIO-SWALE
SECTION C-C
NOT TO SCALE

				SEAL:	THIS DOCUMENT IS THE SOLE PROPERTY OF N&P ENGINEERS & SURVEYORS, PLLC, AND HAS BEEN PREPARED AND DISSEMINATED FOR THE SOLE USE OF OUR CLIENT. THIS DOCUMENT AND ANY DATA, CALCULATIONS, ESTIMATES OR DEPICTIONS CONTAINED HEREIN, MAY NOT BE UTILIZED BY ANY THIRD-PARTY WITHOUT PRIOR WRITTEN CONSENT OF N&P ENGINEERS & SURVEYORS, PLLC, WHICH ASSUMES NO RISK OF LOSS OR LIABILITY RESULTING FROM ANY UNAUTHORIZED USE OR RELIANCE BY ANY THIRD-PARTY.	CONSULTANT:	<div></div> <div>NELSON + POPE engineers • architects • surveyors 70 Maxess Road, Melville, NY 11747 • 631.427.5665 • nelsonpoppe.com</div>	CLIENT:	BROOKHAVEN FREE LIBRARY 273 BEAVER DAM ROAD BROOKHAVEN, NEW YORK 11719	DWN BY: JAR CHK'D BY: JD DATE: MARCH 2021 JOB No.: 18311 CADD: 18311_COV.DWG SCALE: AS SHOWN	DRAWING TITLE: MISCELLANEOUS DETAILS - 2 BROOKHAVEN FREE LIBRARY BROOKHAVEN, NEW YORK 11719	DRAWING NUMBER: MD - 2 SHEET: 3 OF 13
2	11-1-2022	REVISIONS PER TOWN ZBA, PLANNING & HIGHWAY REVIEW/APPROVAL	JD									
1	3-9-2022	UPDATED AS PER T08 PLANNING COMMENTS	KVH									
No.	DATE	REVISION	BY:									

PDT: 230504-12:57 | DIR: G:\PROJECTS\18311\HIGHWAY\18311_COV.DWG_MD-2 | DST: ROADWAY (PDF).PC3 | PST: _ROADWAY - STANDARD.CTB | PSL@ 1:1 | BY: ZT



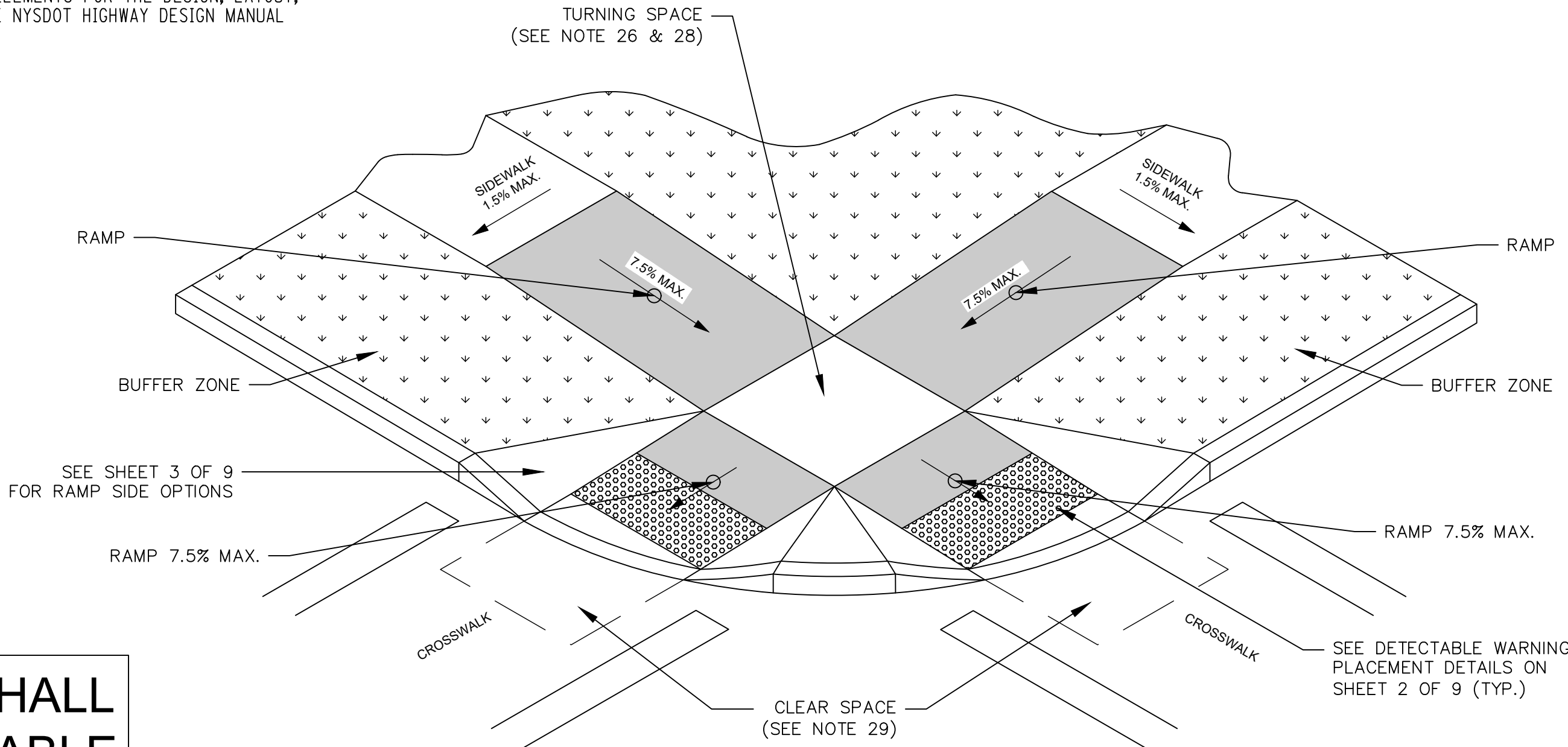
NOTE: ALL CONCRETE CURB RAMPS SHALL BE PAID FOR UNDER ITEM 2A. DETECTABLE WARNING SURFACES SHALL BE PAID FOR UNDER ITEM 2B.



DESIGN ELEMENT TOLERANCES		
ELEMENT	DESIGN AND FIELD LAYOUT LIMIT	LIMIT FOR WORK ACCEPTANCE
SIDEWALK CROSS SLOPE - SEE NOTE 12	1.5% MAX.	2.0% MAX.
SIDEWALK GRADE (RUNNING SLOPE) - SEE NOTE 11	4.5% MAX.	5.0% MAX.
CURB RAMP GRADE (RUNNING SLOPE) - SEE NOTE 21	7.5% MAX.	8.3% MAX.
BLENDED TRANSITION GRADE (RUNNING SLOPE) - SEE NOTE 7	4.5% MAX.	5.0% MAX.

ALL VALUES SHOWN ON THE 608-01 STANDARD SHEETS REFER TO DESIGN AND FIELD LAYOUT LIMITS.

FOR ADDITIONAL REQUIREMENTS AND TOLERANCES, SEE "CRITICAL ELEMENTS FOR THE DESIGN, LAYOUT, AND CONSTRUCTION OF PEDESTRIAN FACILITIES" AVAILABLE ON THE NYSDOT HIGHWAY DESIGN MANUAL CHAPTER 18 WEBSITE.



PDT: 230504-12:57 | DIR: G:\PROJECTS\1831\HIGHWAY\1831_COV.DWG_RD-1 | DST: ROADWAY (PDF).PC3 | PST: _ROADWAY - STANDARD.CTB | PSL@ 1:1 | BY: ZT

No.	DATE	REVISION	BY:
2	11-1-2022	REVISIONS PER TOWN ZBA, PLANNING & HIGHWAY REVIEW/APPROVAL	JD
1	3-9-2022	UPDATED AS PER TOB PLANNING COMMENTS	KVH

SEAL:	

THIS DOCUMENT IS THE SOLE PROPERTY OF N&P ENGINEERS & SURVEYORS, PLLC, AND HAS BEEN PREPARED AND DISSEMINATED FOR THE SOLE USE OF OUR CLIENT. THIS DOCUMENT AND ANY DATA, CALCULATIONS, ESTIMATES OR "DEPICTIONS" CONTAINED HEREIN, MAY NOT BE UTILIZED BY ANY THIRD-PARTY WITHOUT PRIOR WRITTEN CONSENT OF N&P ENGINEERS & SURVEYORS, PLLC, WHICH ASSUMES NO RISK OF LOSS OR LIABILITY RESULTING FROM ANY UNAUTHORIZED USE OR RELIANCE BY ANY THIRD-PARTY.

CONSULTANT:

NELSON + POPE
engineers • architects • surveyors
70 Maxess Road, Melville, NY 11747 • 631.427.5665 • nelsonpoppe.com

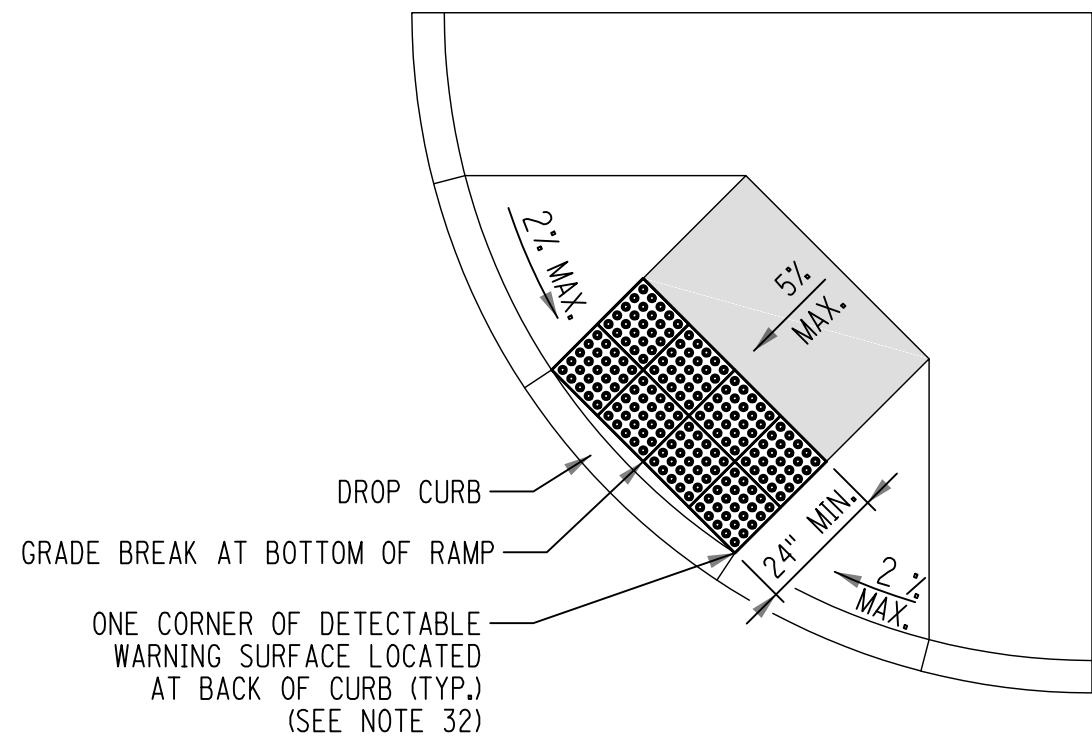
CLIENT:

BROOKHAVEN FREE LIBRARY
273 BEAVER DAM ROAD
BROOKHAVEN, NEW YORK 11719

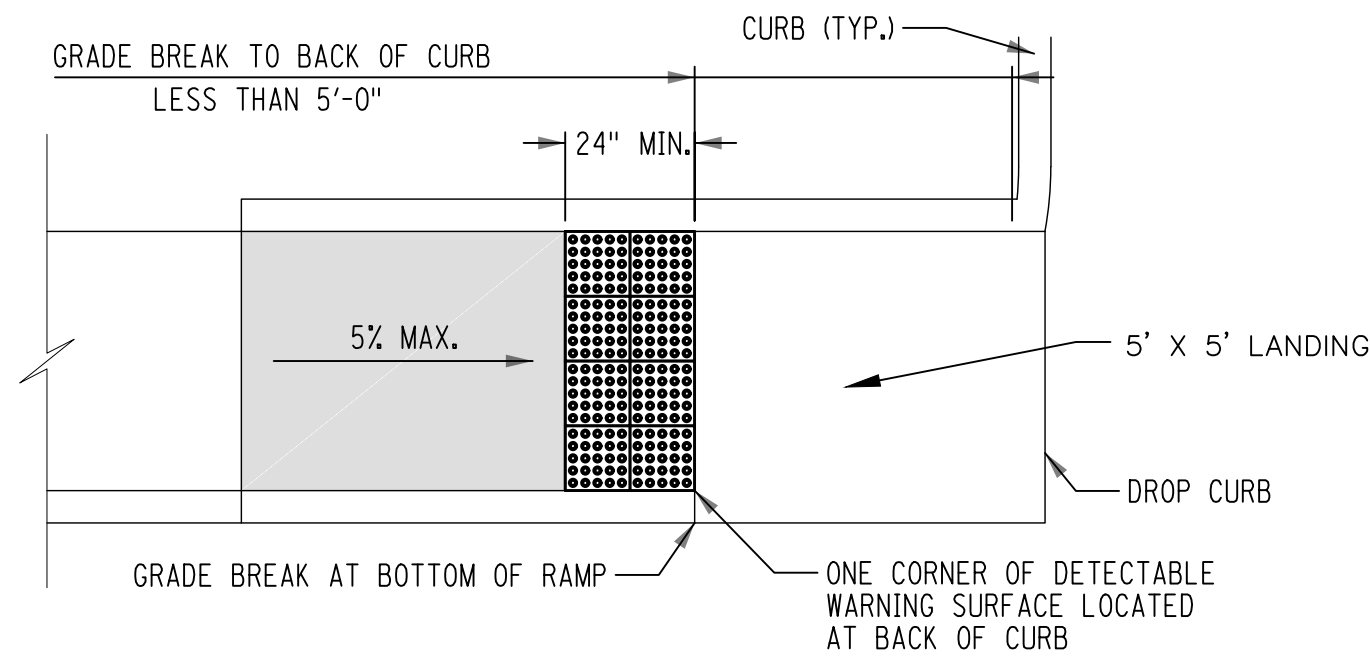
DWN BY:	JAR
CHK'D BY:	JD
DATE:	MARCH 2021
JOB No.:	18311
CADD:	18311_COV.DWG
SCALE:	AS SHOWN

DRAWING TITLE:	SIDEWALK RAMP DETAILS - 1
	BROOKHAVEN FREE LIBRARY BROOKHAVEN, NEW YORK 11719

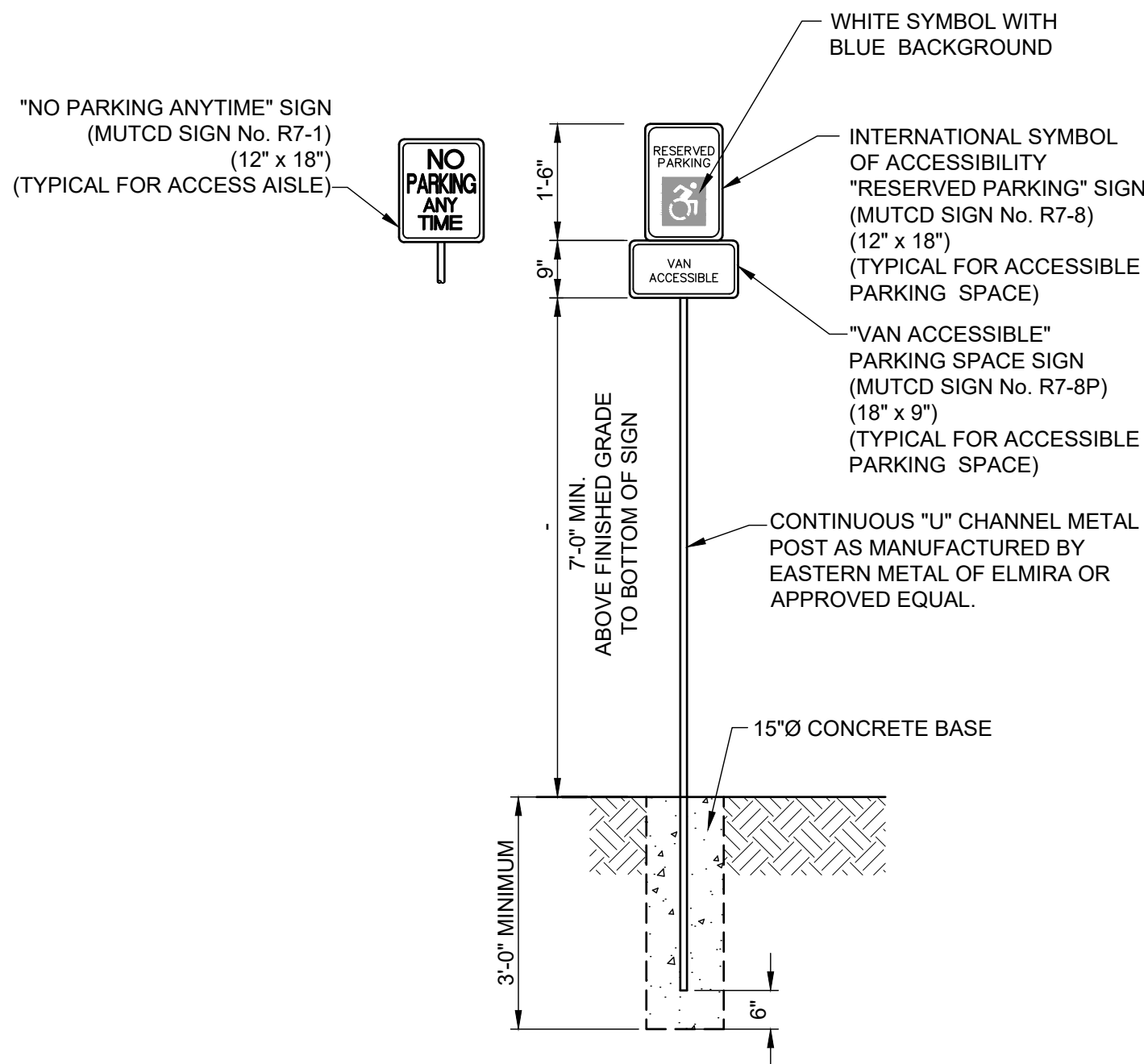
DRAWING NUMBER:	RD-1
SHEET:	4 OF 13



OPTION 1

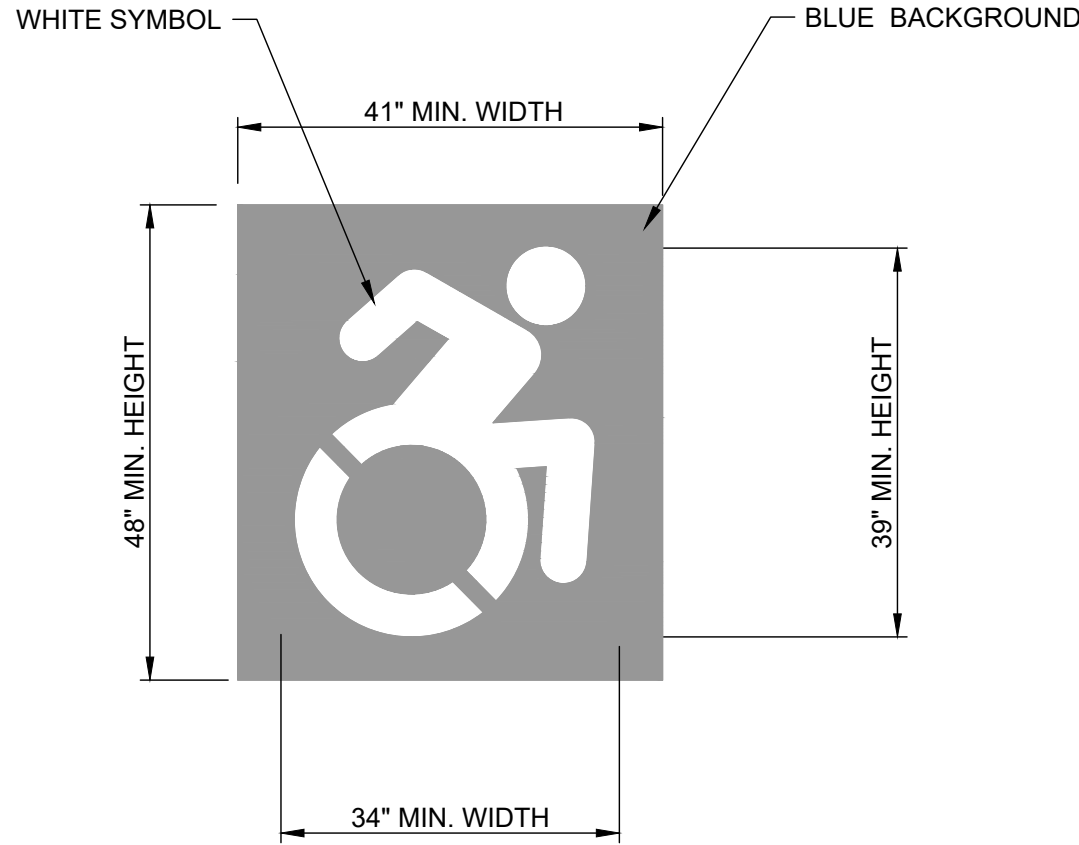


OPTION 2



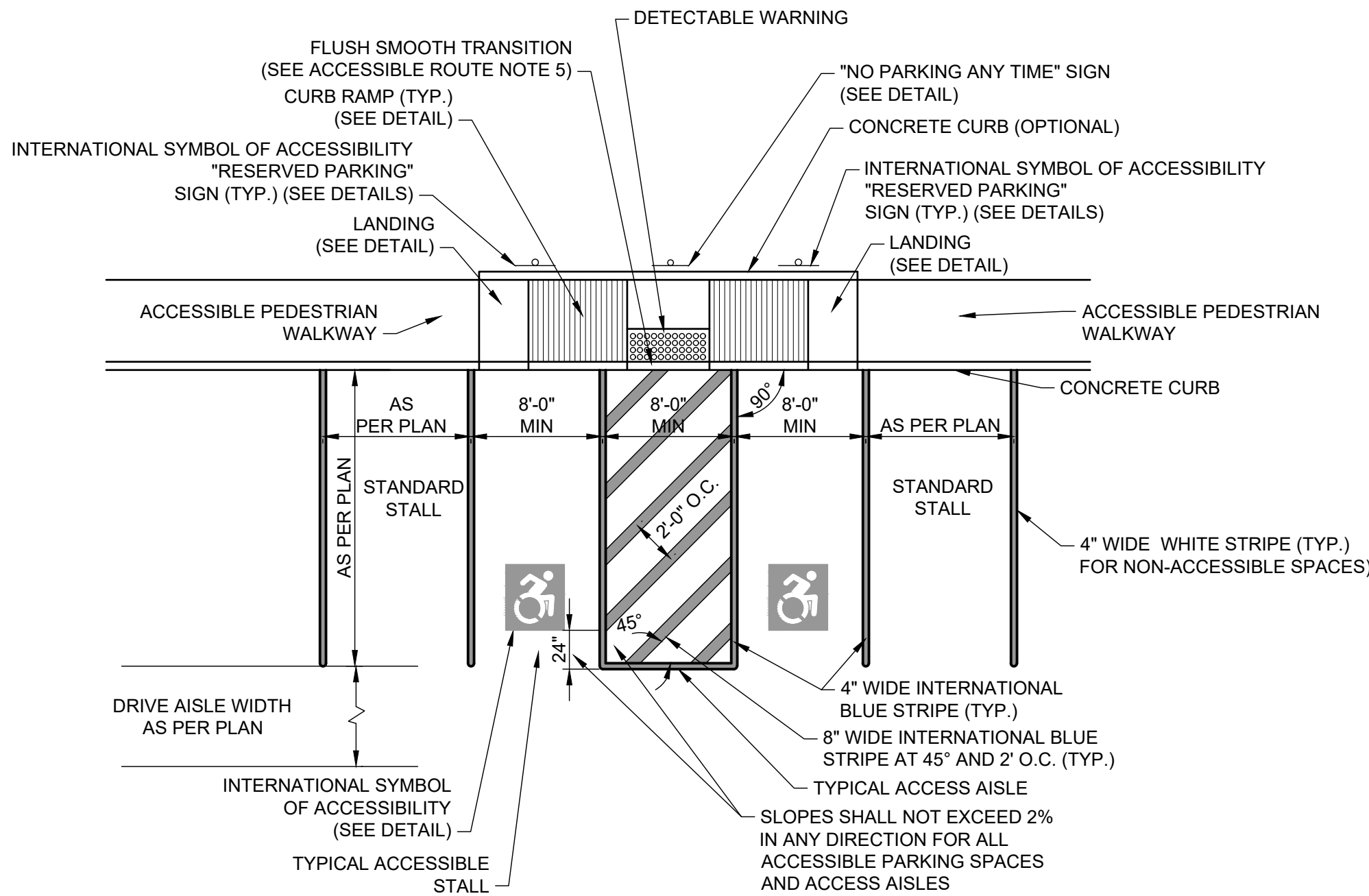
ACCESSIBLE PARKING SPACE
AND ACCESS AISLE SIGN DETAIL

NOT TO SCALE



INTERNATIONAL
SYMBOL OF ACCESSIBILITY
PAVEMENT MARKING DETAIL

NOT TO SCALE

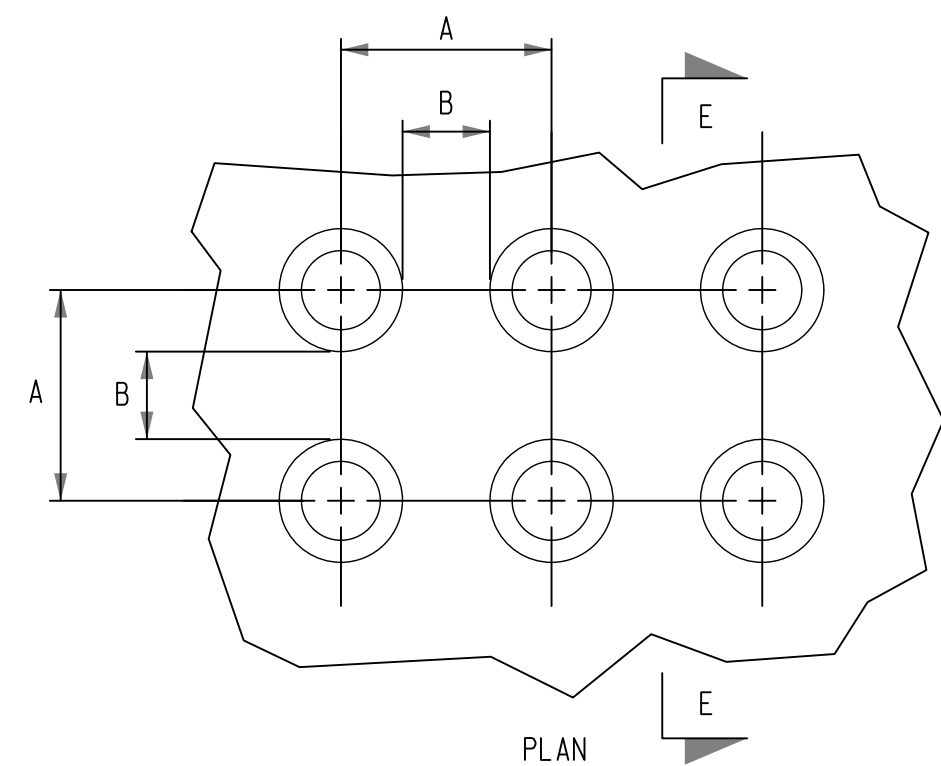


TYPICAL ACCESSIBLE PARKING LAYOUT

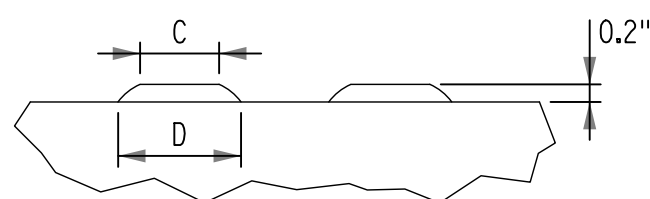
NOT TO SCALE

NOTES:

1. THE ABOVE DETAIL IS INTENDED TO PROVIDE A TYPICAL ACCESSIBLE PARKING LAYOUT. REFER TO PLAN FOR SPECIFIC LAYOUT OF ACCESSIBLE PARKING, ACCESS AISLE, CURB RAMP TYPES AND LOCATIONS, AND ACCESSIBLE ROUTE.
2. ALL PAVEMENT MARKINGS SHALL RECEIVE TWO COATS OF AN A APPROVED PAINT AND SHALL BE APPLIED TO A MINIMUM WET FILM THICKNESS OF 15 MILS.
3. PAVEMENT MARKINGS SHALL BE PAINTED AS REQUIRED BY THE LOCAL CODE OR SPECIFIED BY THE OWNER.
4. THE PAVEMENT MARKINGS SHALL BE MAINTAINED PERMANENTLY ON THE PAVEMENT SURFACE IN THE LAYOUT SHOWN ON THE APPROVED PLAN.
5. THE WIDTH OF THE STALLS SHOWN SHALL BE MEASURED FROM THE CENTERLINE OF THE MARKINGS.
6. INTERNATIONAL SYMBOL OF ACCESSIBILITY "RESERVED PARKING" SIGNAGE MAY BE PLACED 2 FOOT BEHIND THE FACE OF CURB IF THE REQUIRED CLEAR SPACE BEHIND THE SIGN IS PROVIDED FOR THE ACCESSIBLE ROUTE. (SEE ACCESSIBLE ROUTE NOTES).

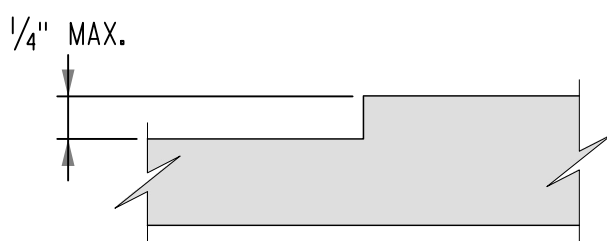


TRUNCATED DOME DIMENSIONS		
DIM.	MIN. (IN)	MAX. (IN)
A	1.6"	2.4"
B	0.65"	1.5"
C	50% - 65% OF D DIM.	
D	0.9"	1.4"

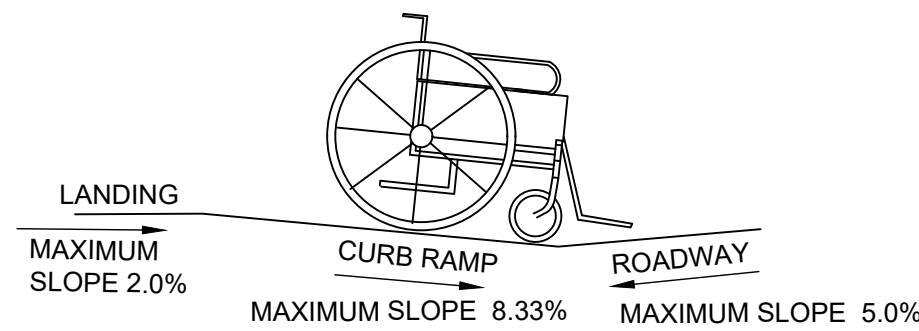


SECTION E-E

DETECTABLE WARNING SURFACE (DWS)
TRUNCATED DOME DETAILS



VERTICAL SURFACE DISCONTINUITIES
SEE NOTE 6 ON SHEET 1 OF 9



COUNTER SLOPE CONDITIONS DETAIL

NOT TO SCALE

NOTE:
THE COUNTER SLOPE OF THE GUTTER OR STREET AT THE FOOT OF A CURB RAMP, LANDING, OR BLENDED TRANSITION SHALL BE 5.0% MAXIMUM.

No.	DATE	REVISION	BY:
2	11-1-2022	REVISIONS PER TOWN ZBA, PLANNING & HIGHWAY REVIEW/APPROVAL	JD
1	3-9-2022	UPDATED AS PER TOW PLANNING COMMENTS	KVH

SEAL:	

THIS DOCUMENT IS THE SOLE PROPERTY OF N&P ENGINEERS & SURVEYORS, PLLC, AND HAS BEEN PREPARED AND DISSEMINATED FOR THE SOLE USE OF OUR CLIENT. THIS DOCUMENT AND ANY DATA, CALCULATIONS, ESTIMATES OR "DEPICTIONS" CONTAINED HEREIN, MAY NOT BE UTILIZED BY ANY THIRD-PARTY WITHOUT PRIOR WRITTEN CONSENT OF N&P ENGINEERS & SURVEYORS, PLLC, WHICH ASSUMES NO RISK OF LOSS OR LIABILITY RESULTING FROM ANY UNAUTHORIZED USE OR RELIANCE BY ANY THIRD-PARTY.

CONSULTANT:

NELSON + POPE
engineers • architects • surveyors
70 Maxess Road, Melville, NY 11747 • 631.427.5665 • nelsonpoppe.com

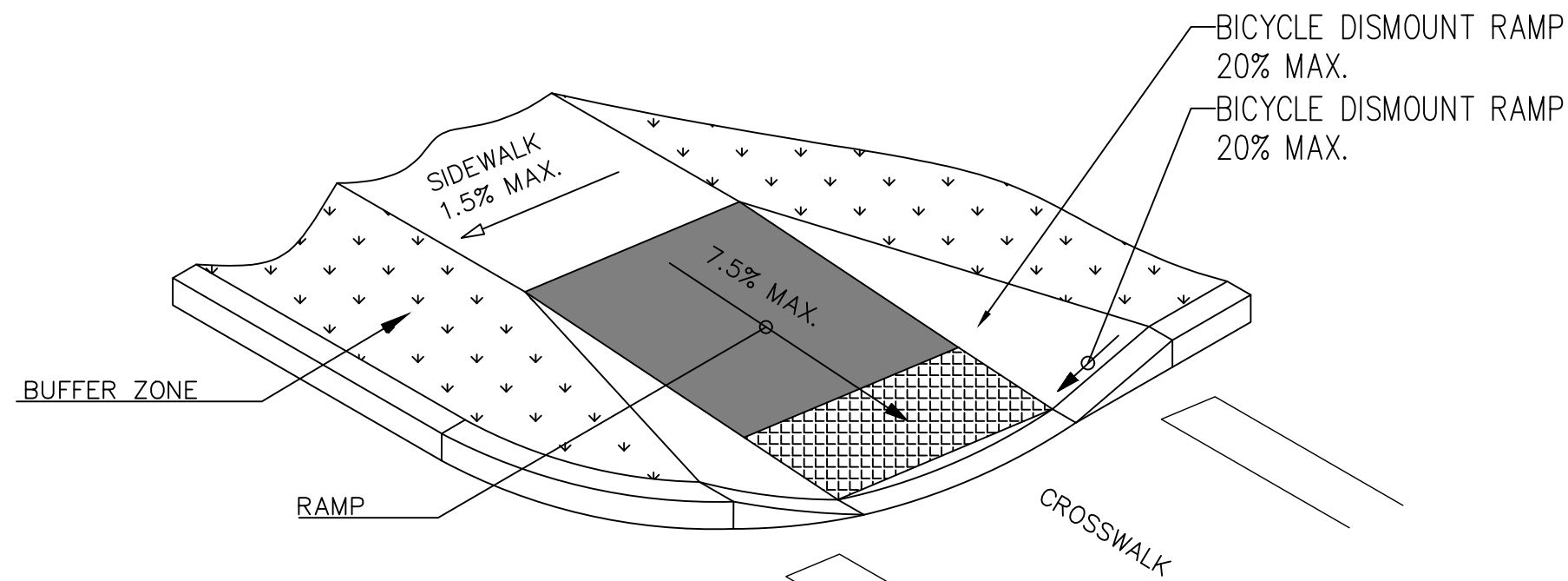
CLIENT:
BROOKHAVEN FREE LIBRARY
273 BEAVER DAM ROAD
BROOKHAVEN, NEW YORK 11719

DWN BY:	JAR
CHK'D BY:	JD
DATE:	MARCH 2021
JOB No.:	18311
CADD:	18311_COV.DWG
SCALE:	AS SHOWN

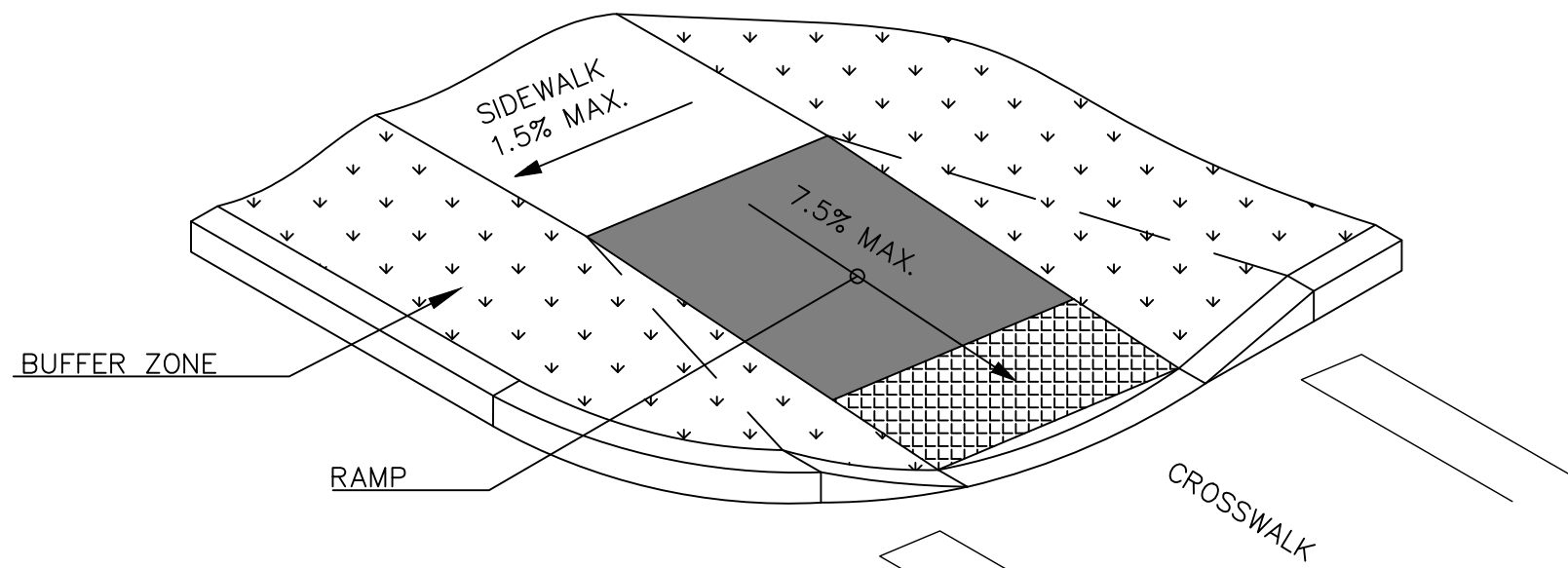
DRAWING TITLE:
SIDEWALK RAMP DETAILS - 2

BROOKHAVEN FREE LIBRARY
BROOKHAVEN, NEW YORK 11719

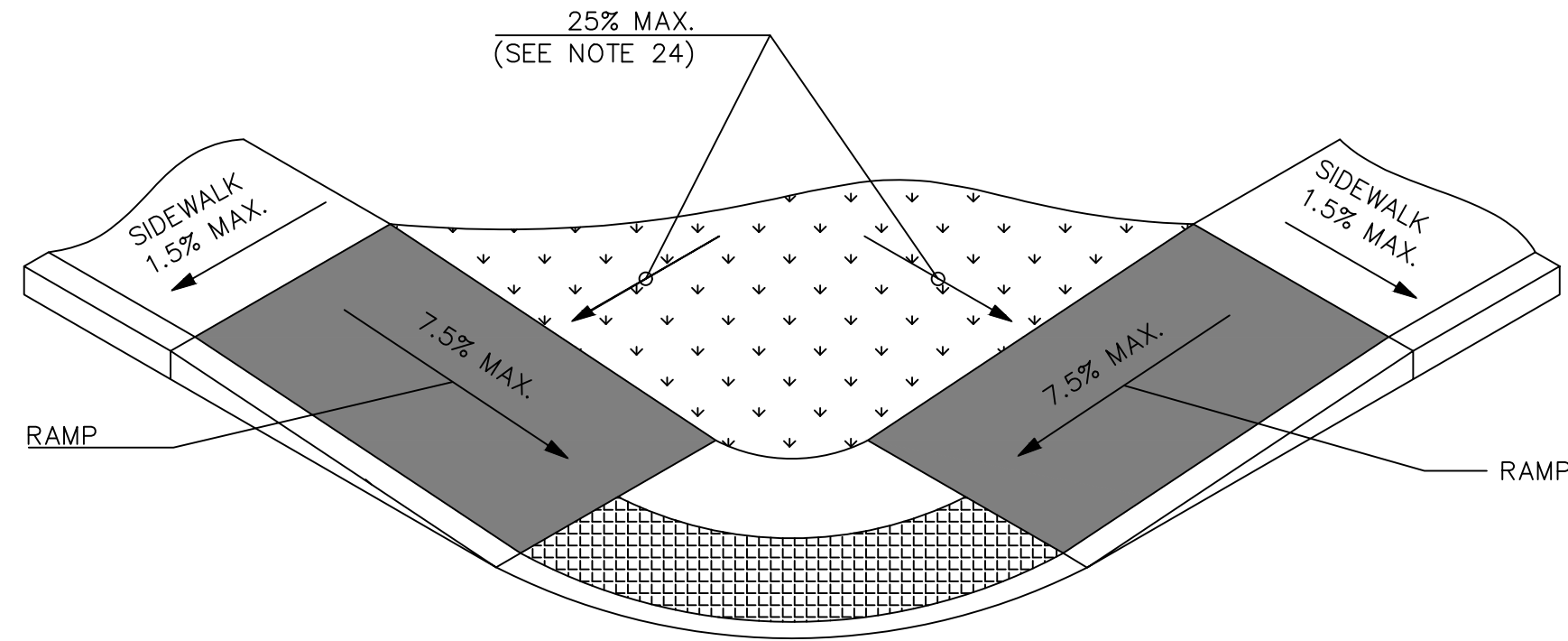
DRAWING NUMBER:	RD-2
SHEET:	5 OF 13



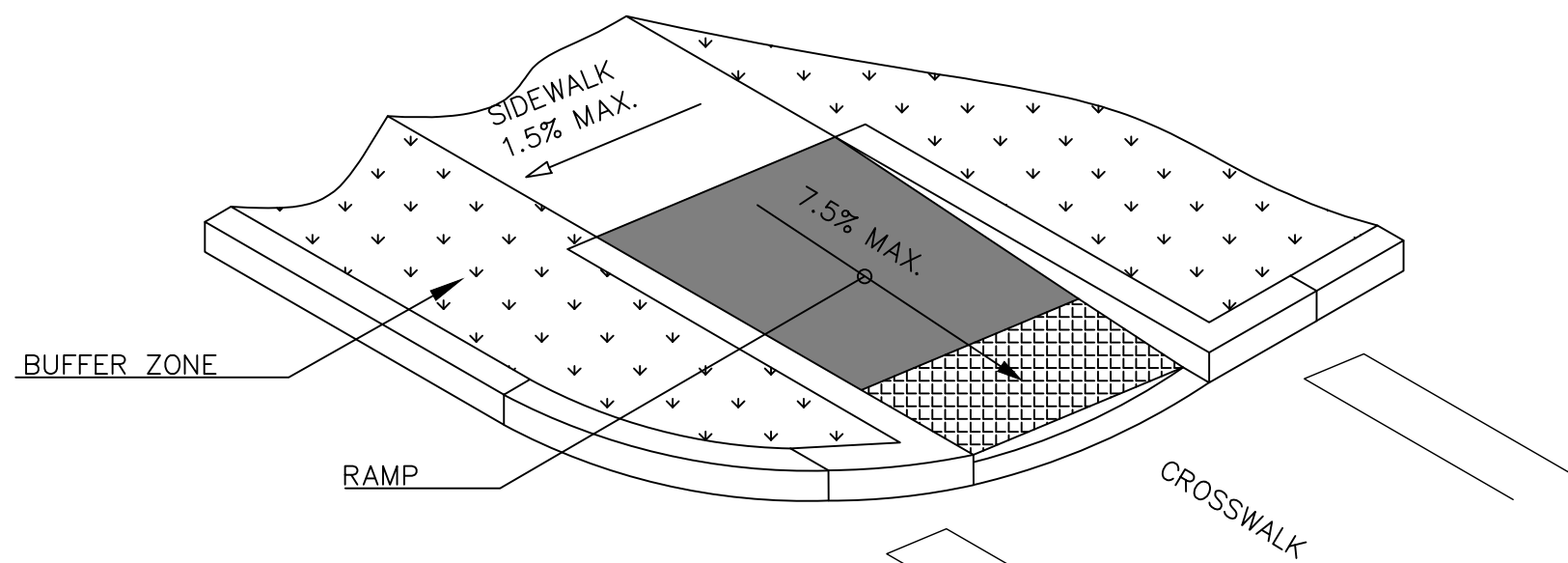
OPTION A: FLARED CONCRETE



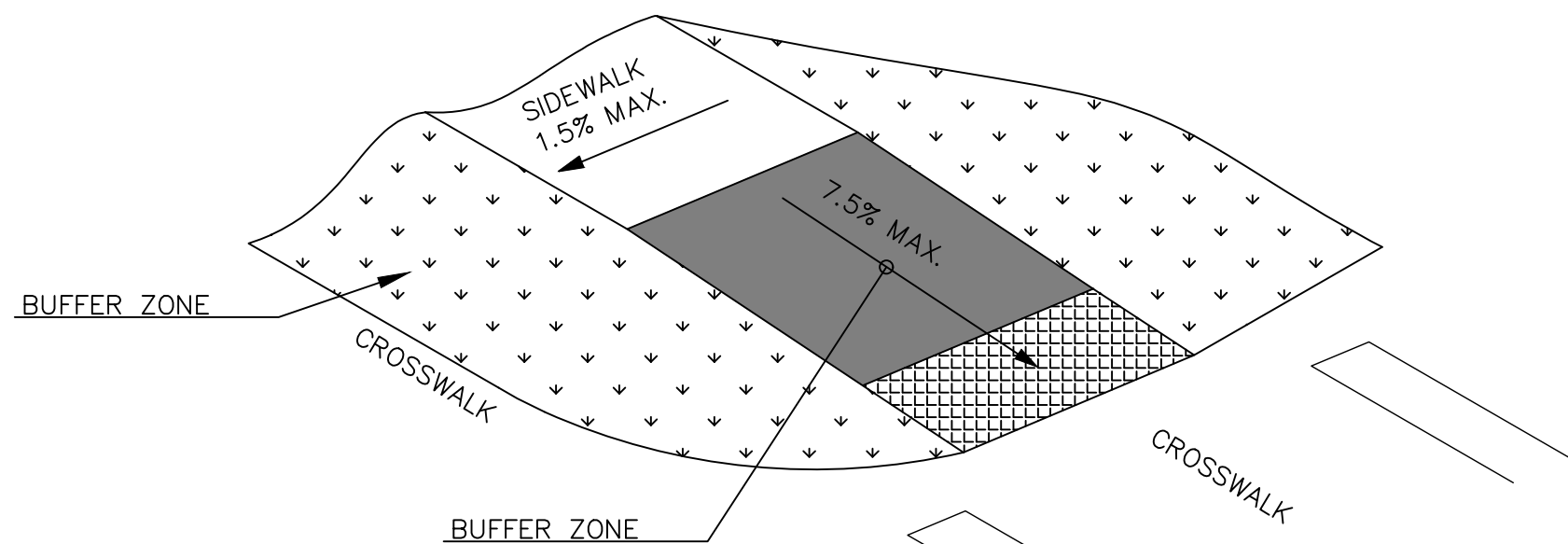
OPTION B: GRADED EARTH



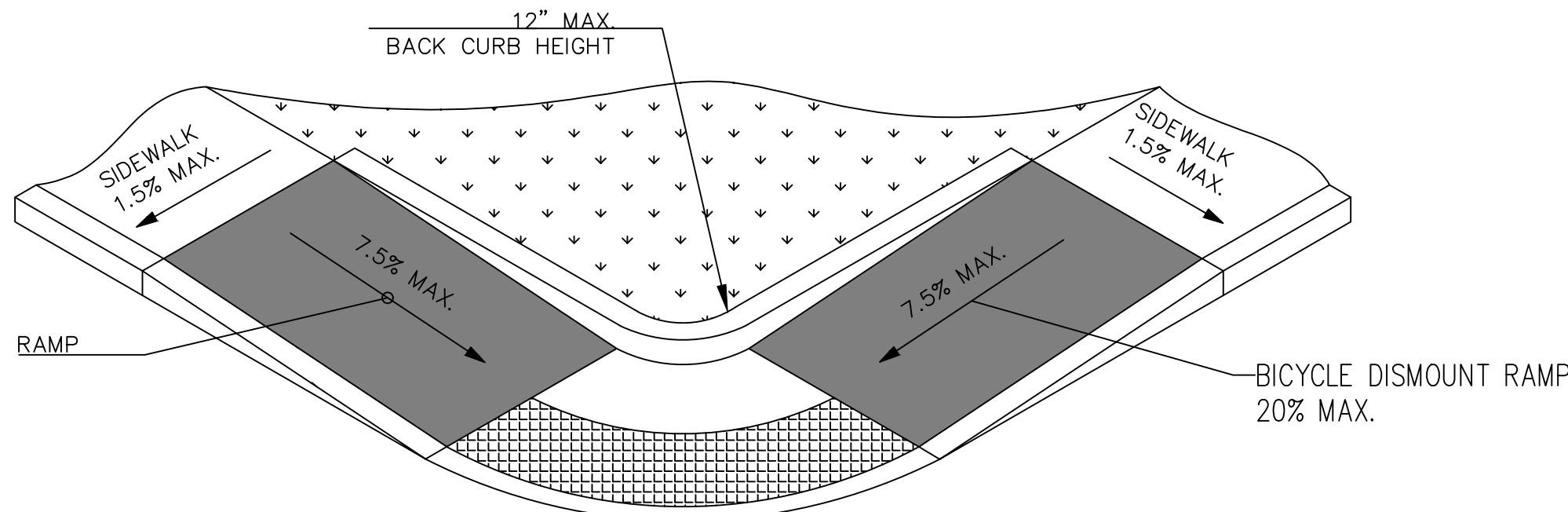
OPTION A: GRADED EARTH AND TURF



BICYCLE DISMOUNT RAMP



OPTION D: UNCURBED INTERSECTION



OPTION B: BACK CURB

PARALLEL RAMP BACK TREATMENTS

RAMP SIDE CONFIGURATIONS

2	11-1-2022	REVISIONS PER TOWN ZBA, PLANNING & HIGHWAY REVIEW/APPROVAL	JD
1	3-9-2022	UPDATED AS PER TOB PLANNING COMMENTS	KVH
No.	DATE	REVISION	BY:

SEAL:

THIS DOCUMENT IS THE SOLE PROPERTY OF N&P ENGINEERS & SURVEYORS, PLLC, AND HAS BEEN PREPARED AND DISSEMINATED FOR THE SOLE USE OF OUR CLIENT. THIS DOCUMENT AND ANY DATA, CALCULATIONS, ESTIMATES OR DEPICTIONS CONTAINED HEREIN, MAY NOT BE UTILIZED BY ANY THIRD-PARTY WITHOUT PRIOR WRITTEN CONSENT OF N&P ENGINEERS & SURVEYORS, PLLC, WHICH ASSUMES NO RISK OF LOSS OR LIABILITY RESULTING FROM ANY UNAUTHORIZED USE OR RELIANCE BY ANY THIRD-PARTY.

CONSULTANT:



NELSON + POPE
engineers • architects • surveyors
70 Maxess Road, Melville, NY 11747 • 631.427.5665 • nelsonpope.com

CLIENT:

BROOKHAVEN FREE LIBRARY
273 BEAVER DAM ROAD
BROOKHAVEN, NEW YORK 11719

DWN BY:	JAR
CHK'D BY:	JD
DATE:	MARCH 2021
JOB No.:	18311
CADD:	18311_COV.DWG
SCALE:	AS SHOWN

DRAWING TITLE:

SIDEWALK RAMP DETAILS - 3

BROOKHAVEN FREE LIBRARY
BROOKHAVEN, NEW YORK 11719

DRAWING NUMBER:

RD-3

SHEET: 6 OF 13

GENERAL NOTES:

- ACCESSIBLE ROUTE NOTES:**

- RAMP NOTES:

- CURB RAMP NOTES:**

- PARKING SPACE NOTES:**

- PASSENGER LOADING ZONE NOTES:**

- ACCESSIBLE ENTRANCE NOTES:**

- SEAL:

CONSULTANT:

NELSON + POPE
engineers • architects • surveyors

70 Maxess Road, Melville, NY 11747 • 631.427.5665 • nelsonpope.com

CLIENT:

BROOKHAVEN FREE LIBRARY
273 BEAVER DAM ROAD
BROOKHAVEN, NEW YORK 11719

DWN. BY:	JAR
CHK'D BY:	JD
DATE:	MARCH 2021
JOB No.:	18311
CADD:	18311_COV.DWG
SCALE:	AS SHOWN

DRAWING TITLE:

SIDEWALK RAMP DETAILS - 4

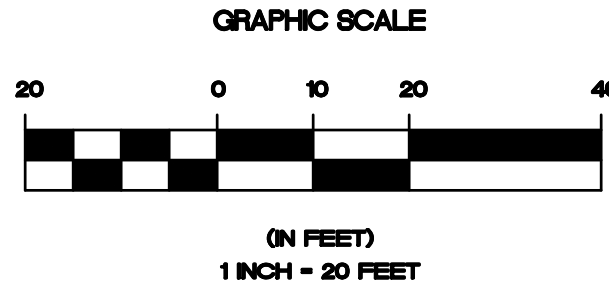
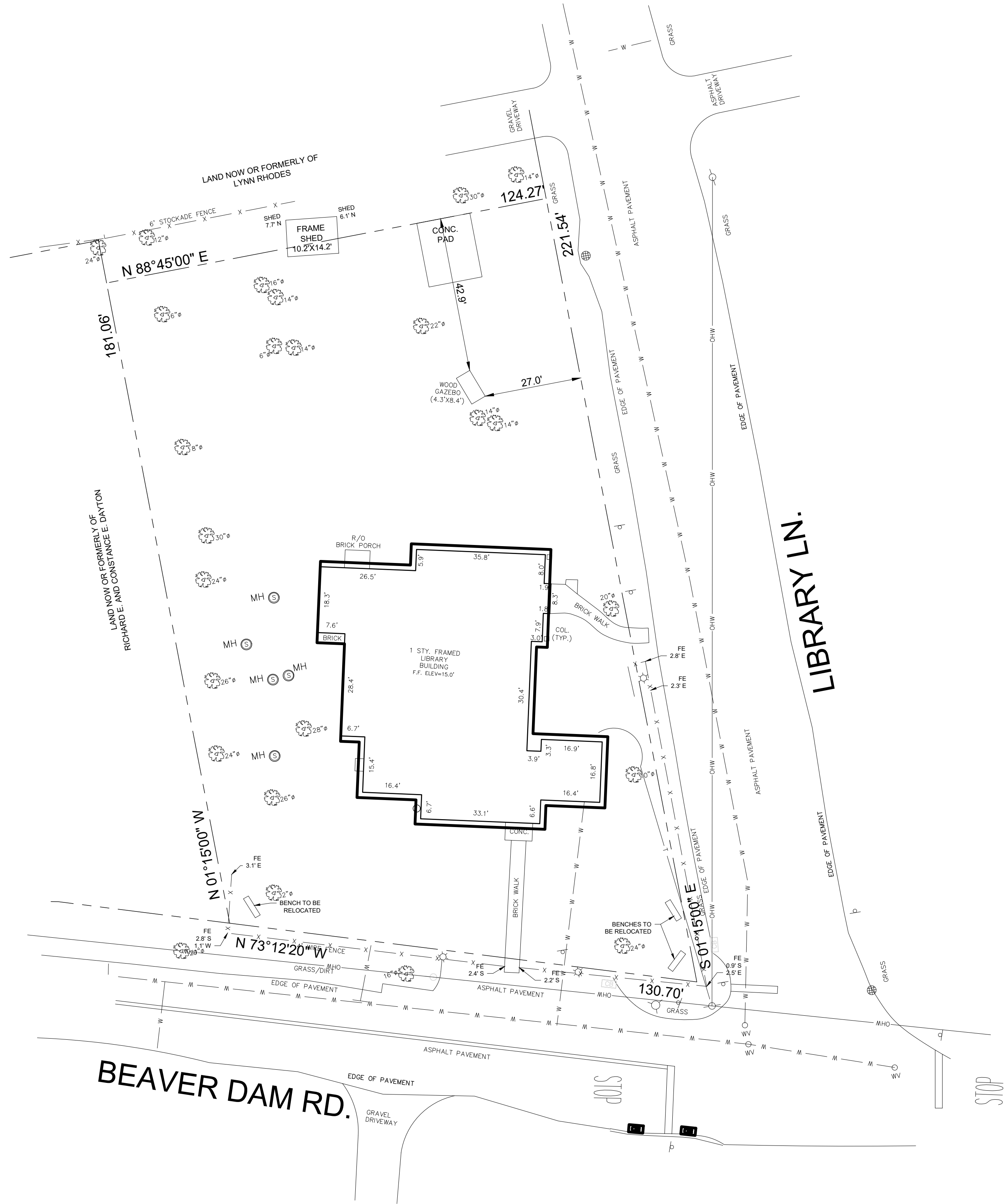
BROOKHAVEN FREE LIBRARY
BROOKHAVEN, NEW YORK 11719

DRAWING NUMBER

RD - 4

SHEET: 7 OF 13

PLOT: 230504-12-57 | DIR: G:\PROJECTS\1831\HIGHWAY\1831_GP_DWG_EC-1 | DST: ROADWAY (PDF).PC3 | PST: ROADWAY - STANDARD.CTB | PSL: 1:1 | BY: ZT



2	11-1-2022	REVISION PER ZBA, PLANNING & HIGHWAY REVIEW/REVISION	JD
1	3-9-2022	UPDATED AS PER TOP PLANNING COMMENTS	KVH
No.	DATE	REVISION	BY:

SEAL:

THIS DOCUMENT IS THE SOLE PROPERTY OF NMP ENGINEERS & SURVEYORS, PLLC, AND HAS BEEN PREPARED AND DISSEMINATED FOR THE SOLE USE OF OUR CLIENT. THIS DOCUMENT AND ANY DATA, CALCULATIONS, ESTIMATES OR DEPICTIONS CONTAINED HEREIN, MAY NOT BE UTILIZED BY ANY THIRD-PARTY WITHOUT PRIOR WRITTEN CONSENT OF NMP ENGINEERS & SURVEYORS, PLLC, WHICH ASSUMES NO RISK OF LOSS OR LIABILITY RESULTING FROM ANY UNAUTHORIZED USE OR RELIANCE BY ANY THIRD-PARTY.

CONSULTANT:

NELSON + POPE
engineers • architects • surveyors
70 Maxess Road, Melville, NY 11747 • 631.427.5665 • nelsonpoppe.com

CLIENT:

BROOKHAVEN FREE LIBRARY
273 BEAVER DAM ROAD
BROOKHAVEN, NEW YORK 11719

DWN BY:	JD/dsd
CHK'D BY:	JD/EM
DATE:	MARCH 2021
JOB No.:	18311
CADD:	18311_GP.DWG
SCALE:	AS SHOWN

DRAWING TITLE:

EXISTING CONDITIONS PLAN - 1

BROOKHAVEN FREE LIBRARY
BROOKHAVEN, NEW YORK 11719

DRAWING NUMBER:
EC - 1
SHEET: 8 OF 13

DUST CONTROL NOTES

DEFINITION

THE CONTROL OF DUST RESULTING FROM LAND-DISTURBING ACTIVITIES.

PURPOSE

TO PREVENT SURFACE AND AIR MOVEMENT OF DUST FROM DISTURBED SOIL SURFACES THAT MAY CAUSE OFF-SITE DAMAGE, HEALTH HAZARDS AND TRAFFIC SAFETY PROBLEMS.

CONDITIONS WHERE PRACTICE APPLIES

ON CONSTRUCTION ROADS, ACCESS POINTS, AND OTHER DISTURBED AREAS SUBJECT TO SURFACE DUST MOVEMENT AND DUST BLOWING WHERE OFF-SITE DAMAGE MAY OCCUR IF DUST IS NOT CONTROLLED.

DESIGN CRITERIA

CONSTRUCTION OPERATIONS SHOULD BE SCHEDULED TO MINIMIZE THE AMOUNT OF AREA DISTURBED AT ONE TIME. BUFFER AREAS OF VEGETATION SHOULD BE LEFT WHERE PRACTICAL. TEMPORARY OR PERMANENT STABILIZATION MEASURES SHOULD BE INSTALLED. NO SPECIFIC DESIGN CRITERIA ARE GIVEN; SEE CONSTRUCTION SPECIFICATIONS BELOW FOR COMMON METHODS OF DUST CONTROL.

WATER QUALITY MUST BE CONSIDERED WHEN MATERIALS ARE SELECTED FOR DUST CONTROL. WHERE THERE IS POTENTIAL FOR THE MATERIAL TO WASH OFF TO A STREAM OR WATER BODY, INGREDIENT INFORMATION MUST BE PROVIDED TO THE LOCAL PERMITTING AUTHORITY.

CONSTRUCTION SPECIFICATIONS

A. NON-DRIVING AREAS - THESE AREAS USE PRODUCTS AND MATERIALS APPLIED OR PLACED ON SOIL SURFACES TO PREVENT AIRBORNE MIGRATION OF SOIL PARTICLES.

VEGETATIVE COVER - FOR DISTURBED AREAS NOT SUBJECT TO TRAFFIC; VEGETATION PROVIDES THE MOST PRACTICAL METHOD OF DUST CONTROL. TEMPORARY SEEDING SHALL BE AS FOLLOWS:

RYE GRASS (ANNUAL OR PERENNIAL) AT 30 LBS. PER ACRE (0.7 LBS./1,000 S.F.)

CERTIFIED "AROOSTOOK" WINTER RYE (CEREAL RYE) AT 100 LBS. PER ACRE (2.5 LBS./S.F.)

USE WINTER RYE IF SEEDING IN OCTOBER / NOVEMBER.

MULCH (INCLUDING GRAVEL MULCH) - MULCH OFFERS A FAST, EFFECTIVE MEANS OF CONTROLLING DUST. THIS CAN ALSO INCLUDE ROLLED EROSION CONTROL BLANKETS.

SPRAY ADHESIVES - THESE ARE PRODUCTS GENERALLY COMPOSED OF POLYMERS IN A LIQUID OR SOLID FORM THAT ARE MIXED WITH WATER TO FORM AN EMULSION THAT IS SPRAYED ON THE SOIL SURFACE WITH TYPICAL HYDROSEEDING EQUIPMENT. THE MIXING RATIOS AND APPLICATION RATES WILL BE IN ACCORDANCE WITH THE MANUFACTURER'S RECOMMENDATIONS FOR THE SPECIFIC SOILS ON THE SITE. IN NO CASE SHOULD THE APPLICATION OF THESE ADHESIVES BE MADE ON WET SOILS OR IF THERE IS A PROBABILITY OF PRECIPITATION WITHIN 48 HOURS OF ITS PROPOSED USE. MATERIAL SAFETY DATA SHEETS WILL BE PROVIDED TO ALL APPLICATORS AND OTHERS WORKING WITH THE MATERIAL.

EXAMPLES OF SPRAY ADHESIVES FOR USE ON MINERAL SOILS ARE SHOWN IN THE FOLLOWING TABLE.

MATERIAL	WATER DILUTION	TYPE OF NOZZLE	APPLY GALLONS ACRE
ACRYLIC POLYMER	9:1	COURSE SPRAY	500
LATEX EMULSION	12.5:1	FINE SPRAY	235
RESIN IN WATER	4:1	FINE SPRAY	300

B. DRIVING AREAS - THESE AREAS UTILIZE WATER, POLYMER EMULSIONS AND BARRIERS TO PREVENT DUST MOVEMENT FROM THE TRAFFIC SURFACE INTO THE AIR.

SPRINKLING - THIS SITE MAY BE SPRAYED UNTIL THE SURFACE IS WET. THIS IS ESPECIALLY EFFECTIVE ON HAUL ROADS AND ACCESS ROUTES.

POLYMER ADDITIVES - THESE POLYMERS ARE MIXED WITH WATER AND APPLIED TO THE DRIVING SURFACE BY A WATER TRUCK WITH A GRAVITY FEED DRIP BAR, SPRAY BAR OR AUTOMATED DISTRIBUTOR TRUCK. THE MIXING RATIOS AND APPLICATION RATES WILL BE IN ACCORDANCE WITH THE MANUFACTURER'S RECOMMENDATIONS. INCORPORATION OF THE EMULSION INTO THE SOIL WILL BE DONE TO THE APPROPRIATE DEPTH BASED ON EXPECTED TRAFFIC. COMPACTION AFTER INCORPORATION WILL BE BY VIBRATORY ROLLER TO A MINIMUM OF 95%. THE PREPARED SURFACE SHALL BE MOIST AND NO APPLICATION OF THE POLYMER WILL BE MADE IF THERE IS A PROBABILITY OF PRECIPITATION WITHIN 48 HOURS OF ITS PROPOSED USE. MATERIAL SAFETY DATA SHEETS WILL BE PROVIDED TO ALL APPLICATORS WORKING WITH THE MATERIAL.

BARRIERS - WOVEN GEOTEXTILES CAN BE PLACED ON THE DRIVING SURFACE TO EFFECTIVELY REDUCE DUST THROW AND PARTICLE MIGRATION ON HAUL ROADS. STONE CAN ALSO BE USED FOR CONSTRUCTION ROADS FOR EFFECTIVE DUST CONTROL.

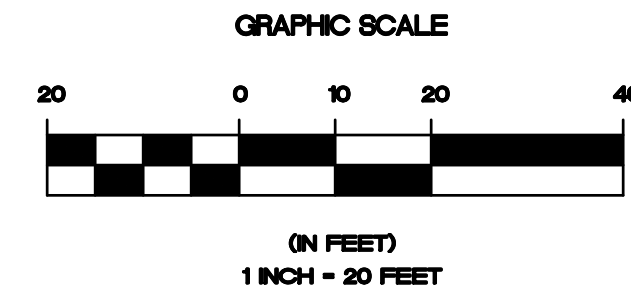
WINDBREAK - A SILT FENCE OR SIMILAR BARRIER CAN CONTROL AIR CURRENTS AT INTERVALS EQUAL TO TEN TIMES THE BARRIER HEIGHT. PRESERVE EXISTING WIND BARRIER VEGETATION AS MUCH AS PRACTICAL.

MAINTENANCE

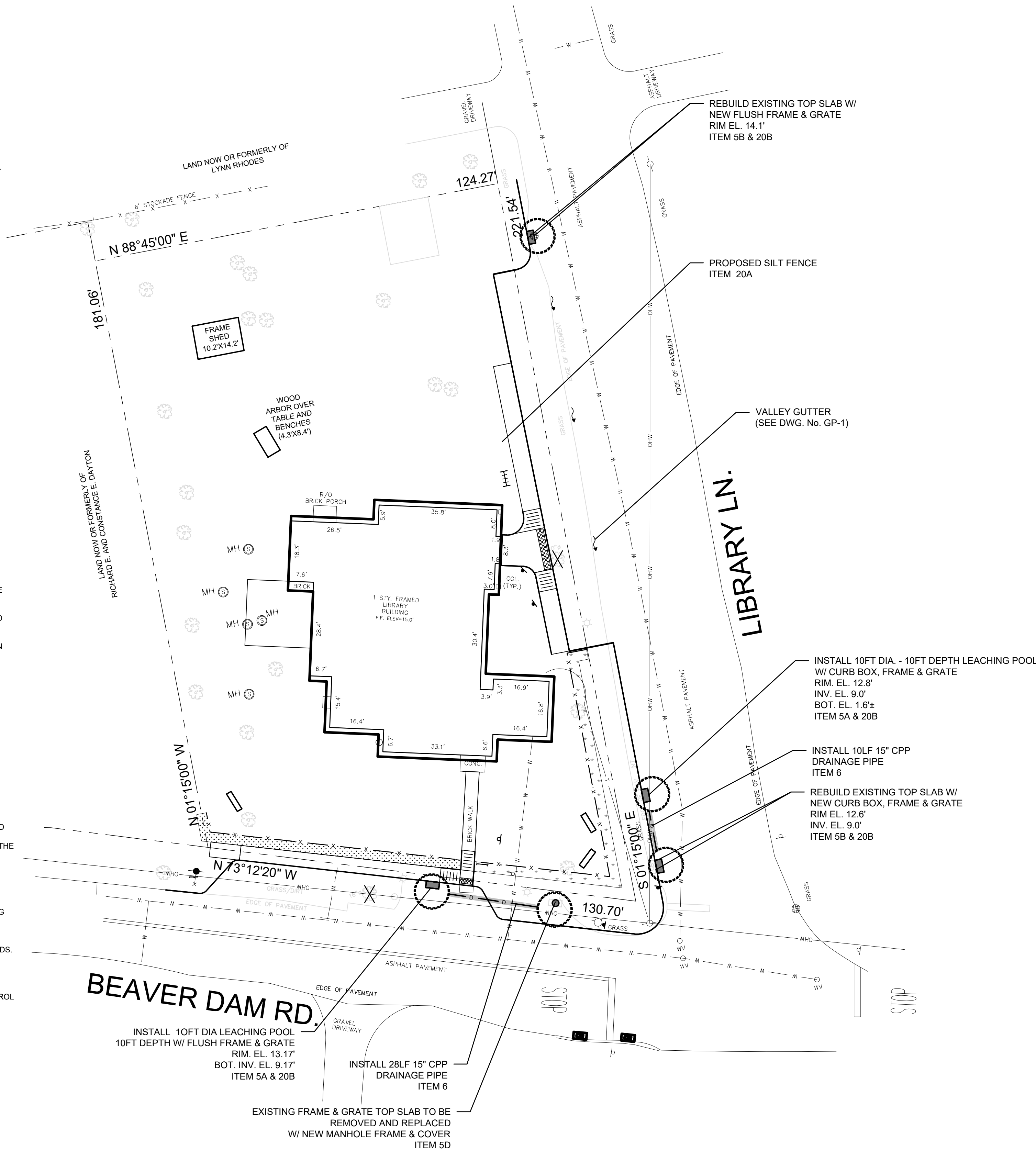
MAINTAIN DUST CONTROL MEASURES THROUGH DRY WEATHER PERIODS UNTIL ALL DISTURBED AREAS ARE STABILIZED.

EROSION CONTROL NOTES

- A - EXISTING VEGETATION TO REMAIN SHALL BE PROTECTED AND REMAIN UNDISTURBED.
- B - CLEARING AND GRADING SHALL BE SCHEDULED SO AS TO MINIMIZE THE SIZE OF EXPOSED AREAS AND THE LENGTH OF TIME THAT AREAS ARE EXPOSED.
- C - THE LENGTH AND STEEPNESS OF CLEARED SLOPES SHALL BE MINIMIZED TO REDUCE RUN-OFF VELOCITIES.
- D - RUN-OFF SHALL BE DIVERTED AWAY FROM CLEARED SLOPES.
- E - SEDIMENT SHALL BE TRAPPED ON-SITE.
2. SPECIFIC METHODS AND MATERIALS EMPLOYED IN THE INSTALLATION AND MAINTENANCE OF EROSION CONTROL MEASURES SHALL CONFORM TO THE NEW YORK GUIDELINES FOR EROSION AND SEDIMENT CONTROL, LATEST EDITION.
3. SEDIMENT BARRIERS (SILT FENCES, HAY BALES OR APPROVED EQUAL) SHALL BE INSTALLED AS REQUIRED ALONG LIMITS OF DISTURBANCE FOR THE DURATION OF THE WORK. NO SEDIMENT FROM THE SITE SHALL BE PERMITTED TO WASH ON TO ADJACENT PROPERTIES, WETLANDS OR ROADS.
4. GRADED AND STRIPPED AREAS AND STOCKPILES SHALL BE KEPT STABILIZED THROUGH THE USE OF TEMPORARY SEEDING AS REQUIRED. SEED MIXTURE SHALL BE IN ACCORDANCE WITH SOIL CONSERVATION SERVICE RECOMMENDATIONS.
5. DRAINAGE INLETS INSTALLED AS PART OF THE PROJECT SHALL BE PROTECTED FROM SEDIMENT BUILD-UP THROUGH THE USE OF SEDIMENT BARRIERS, SEDIMENT TRAPS, ETC., AS REQUIRED.
6. INSPECTION AND MAINTENANCE OF EROSION CONTROL MEASURES IS TO BE PERFORMED DAILY BY CONTRACTOR PRIOR TO THE START OF CONSTRUCTION FOR THE DAY AND AFTER HEAVY OR PROLONGED STORMS. MAINTENANCE MEASURES INCLUDE, BUT NOT LIMITED TO, CLEANING OF SEDIMENT BASINS OR TRAPS, CLEANING OR REPAIR OF SEDIMENT BARRIERS, CLEANING AND REPAIR OF BERMS AND DIVERSIONS, AND CLEANING AND REPAIR OF OF INLET PROTECTION.
7. APPROPRIATE MEANS SHALL BE USED TO CONTROL DUST DURING CONSTRUCTION. SEE DUST CONTROL NOTES, THIS SHEET.
8. A STABILIZED CONSTRUCTION ENTRANCE SHALL BE MAINTAINED TO PREVENT SOIL AND LOOSE DEBRIS FROM BEING TRACKED ONTO LOCAL ROADS. THE CONSTRUCTION ENTRANCE SHALL BE MAINTAINED UNTIL THE SITE IS PERMANENTLY STABILIZED.
9. SEDIMENT BARRIERS AND OTHER EROSION CONTROL MEASURES SHALL REMAIN IN PLACE UNTIL UPLAND DISTURBED AREAS ARE PERMANENTLY STABILIZED. AFTER PERMANENT STABILIZATION, PAVED AREAS SHALL BE CLEANED AND DRAINAGE SYSTEM FLUSHED AS NECESSARY.
10. DURING THE COURSE OF CONSTRUCTION, CERTAIN EROSION AND SEDIMENT CONTROL MEASURES MAY BECOME NECESSARY TO PREVENT THE TRANSPORT OF SEDIMENT TO OFF-SITE AREAS, PONDS, WATER COURSES, DRAINAGE INLETS, RECHARGE BASINS, ETC. ACTUAL EROSION CONTROL MEASURES WILL BE DICTATED BY FIELD CONDITIONS AS CONSTRUCTION PROGRESSES BUT THE GENERAL CONDITIONS IN NOTES 1 THROUGH 9 SHALL BE OBSERVED.



NORTH



LEGEND:

- FULL DEPTH ASPHALT ROAD RESTORATION ITEM 4A
- DRAINAGE STRUCTURE ITEM 5A
- 'RAIN GUARDIAN' DRAINAGE STRUCTURE ITEM 5C
- DRAINAGE PIPE ITEM 6
- CONCRETE CURB ITEM 1A
- SAWCUT PAVEMENT

PLOT: 230504-12:57 | DIR: G:\PROJECTS\1831\HIGHWAY\1831_GP_DWG_DP-1 | DST: ROADWAY (PDF).PC3 | PST: _ROADWAY - STANDARD.CTB | PLS: 1:1 | BY: ZT

3	5-1-2023	REVISED PER HW COMMENTS	ZT/JD
2	11-1-2022	REVISION PER ZBA, PLANNING & HIGHWAY REVIEW/REVISION	JD
1	3-9-2022	UPDATED AS PER TOP PLANNING COMMENTS	KVH
No.	DATE	REVISION	BY:

SEAL:	

THIS DOCUMENT IS THE SOLE PROPERTY OF NMP ENGINEERS & SURVEYORS, PLLC, AND HAS BEEN PREPARED AND DISSEMINATED FOR THE SOLE USE OF OUR CLIENT. THIS DOCUMENT AND ANY DATA, CALCULATIONS, ESTIMATES OR "DEPICTIONS" CONTAINED HEREIN, MAY NOT BE UTILIZED BY ANY THIRD-PARTY WITHOUT PRIOR WRITTEN CONSENT OF NMP ENGINEERS & SURVEYORS, PLLC, WHICH ASSUMES NO RISK OF LOSS OR LIABILITY RESULTING FROM ANY UNAUTHORIZED USE OR RELIANCE BY ANY THIRD-PARTY.

CONSULTANT:

NELSON + POPE
engineers • architects • surveyors
70 Maxess Road, Melville, NY 11747 • 631.427.5665 • nelsonpoppe.com

CLIENT:

BROOKHAVEN FREE LIBRARY
273 BEAVER DAM ROAD
BROOKHAVEN, NEW YORK 11719

DWN BY:	JD/dsd
CHK'D BY:	JD/EM
DATE:	MARCH 2021
JOB No.:	18311
CADD:	18311_GP.DWG
SCALE:	AS SHOWN

DRAWING TITLE:

DRAINAGE PLAN - 1
BROOKHAVEN FREE LIBRARY
BROOKHAVEN, NEW YORK 11719

DRAWING NUMBER:

DP - 1

SHEET: 10 OF 13

PLOT: 230504-12:57 | DIR: G:\PROJECTS\1831\HIGHWAY\1831_GP-DWG-1 | DST: ROADWAY (PDF).PC3 | PST: ROADWAY - STANDARD.CTB | PSL: 1:1 | BY: ZT

2	11-1-2022	REVISION PER ZBA, PLANNING & HIGHWAY REVIEW/REVISION	JD
1	3-9-2022	UPDATED AS PER TOB PLANNING COMMENTS	KVH
No.	DATE	REVISION	BY:

SEAL:

THIS DOCUMENT IS THE SOLE PROPERTY OF NMP ENGINEERS & SURVEYORS, PLLC, AND HAS BEEN PREPARED AND DISSEMINATED FOR THE SOLE USE OF OUR CLIENT. THIS DOCUMENT AND ANY DATA, CALCULATIONS, ESTIMATES OR DEPICTIONS CONTAINED HEREIN, MAY NOT BE UTILIZED BY ANY THIRD-PARTY WITHOUT PRIOR WRITTEN CONSENT OF NMP ENGINEERS & SURVEYORS, PLLC, WHICH ASSUMES NO RISK OF LOSS OR LIABILITY RESULTING FROM ANY UNAUTHORIZED USE OR RELIANCE BY ANY THIRD-PARTY.

CONSULTANT:

NELSON+POPE

engineers • architects • surveyors

70 Maxess Road, Melville, NY 11747 • 631.427.5665 • nelsonpoppe.com

CLIENT:

BROOKHAVEN FREE LIBRARY

273 BEAVER DAM ROAD

BROOKHAVEN, NEW YORK 11719

DWN BY:	JD/dsd
CHK'D BY:	JD/EM
DATE:	MARCH 2021
JOB No.:	18311
CADD:	18311_GP.DWG
SCALE:	AS SHOWN

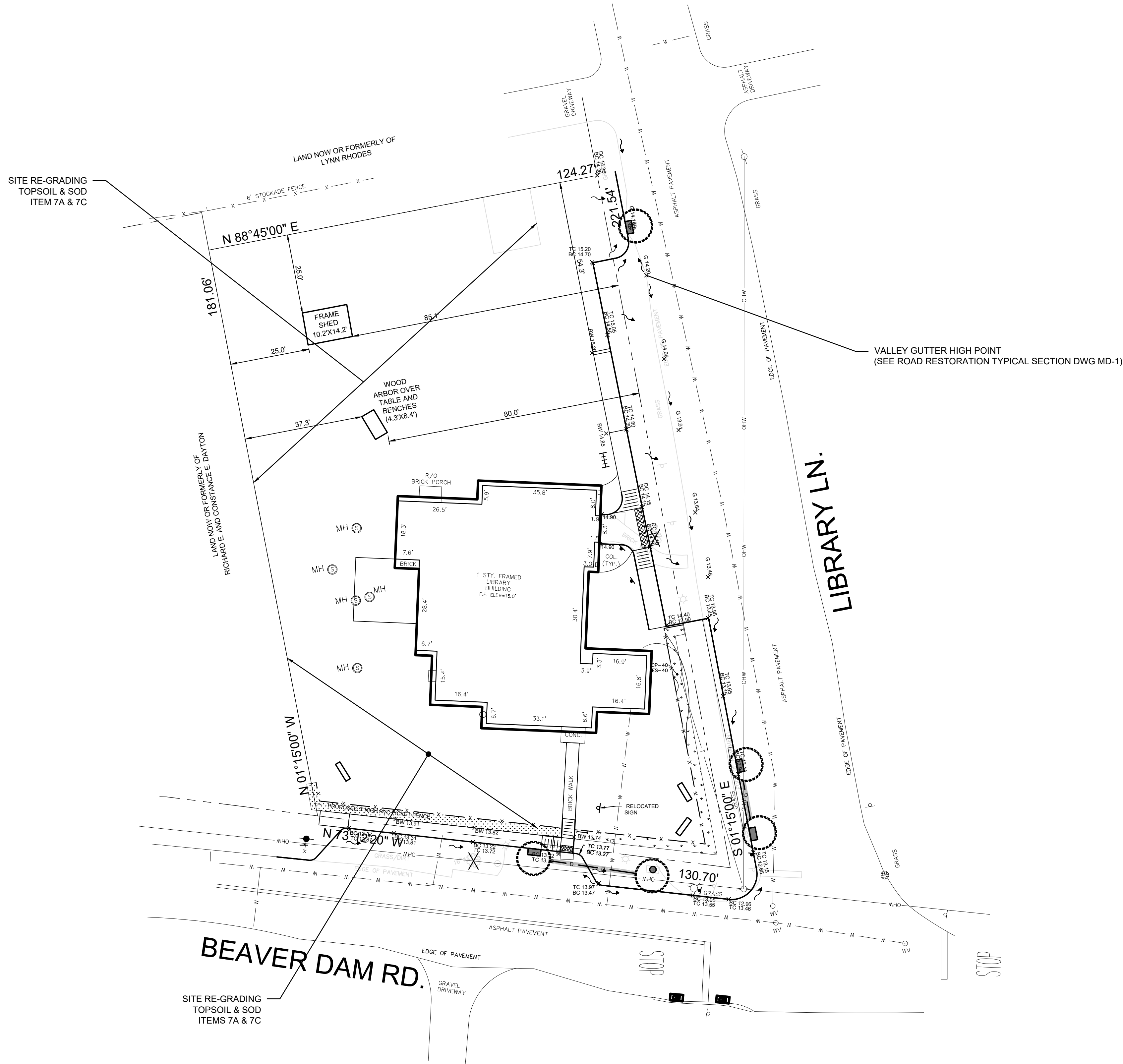
DRAWING TITLE:

GRADING PLAN - 1

BROOKHAVEN FREE LIBRARY

BROOKHAVEN, NEW YORK 11719

DRAWING NUMBER:
GP - 1
SHEET: 11 OF 13



GRAPHIC SCALE

20 0 10 20 40

(IN FEET)

1 INCH = 20 FEET

NORTH

LEGEND:

--- 10.0 ---

EXISTING MAJOR GRADING CONTOUR

--- 10.2 ---

EXISTING MINOR GRADING CONTOUR

x^E XX.XX

PROPOSED GRADE

— 10.0 —

PROPOSED MAJOR GRADING CONTOUR

— 10.2 —

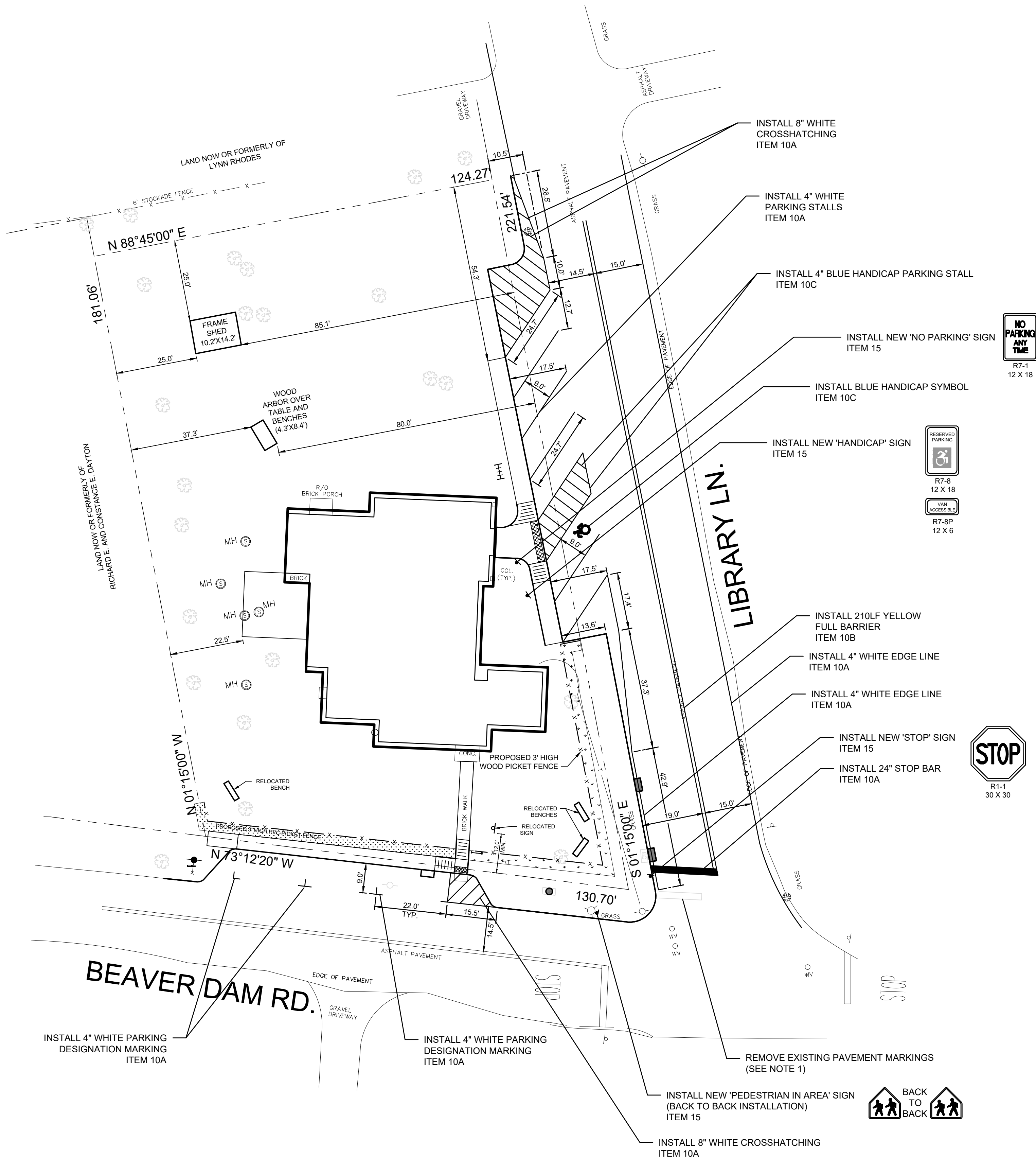
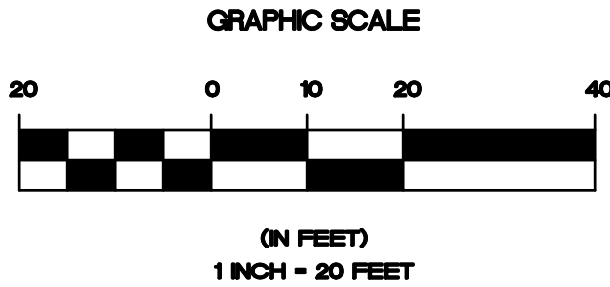
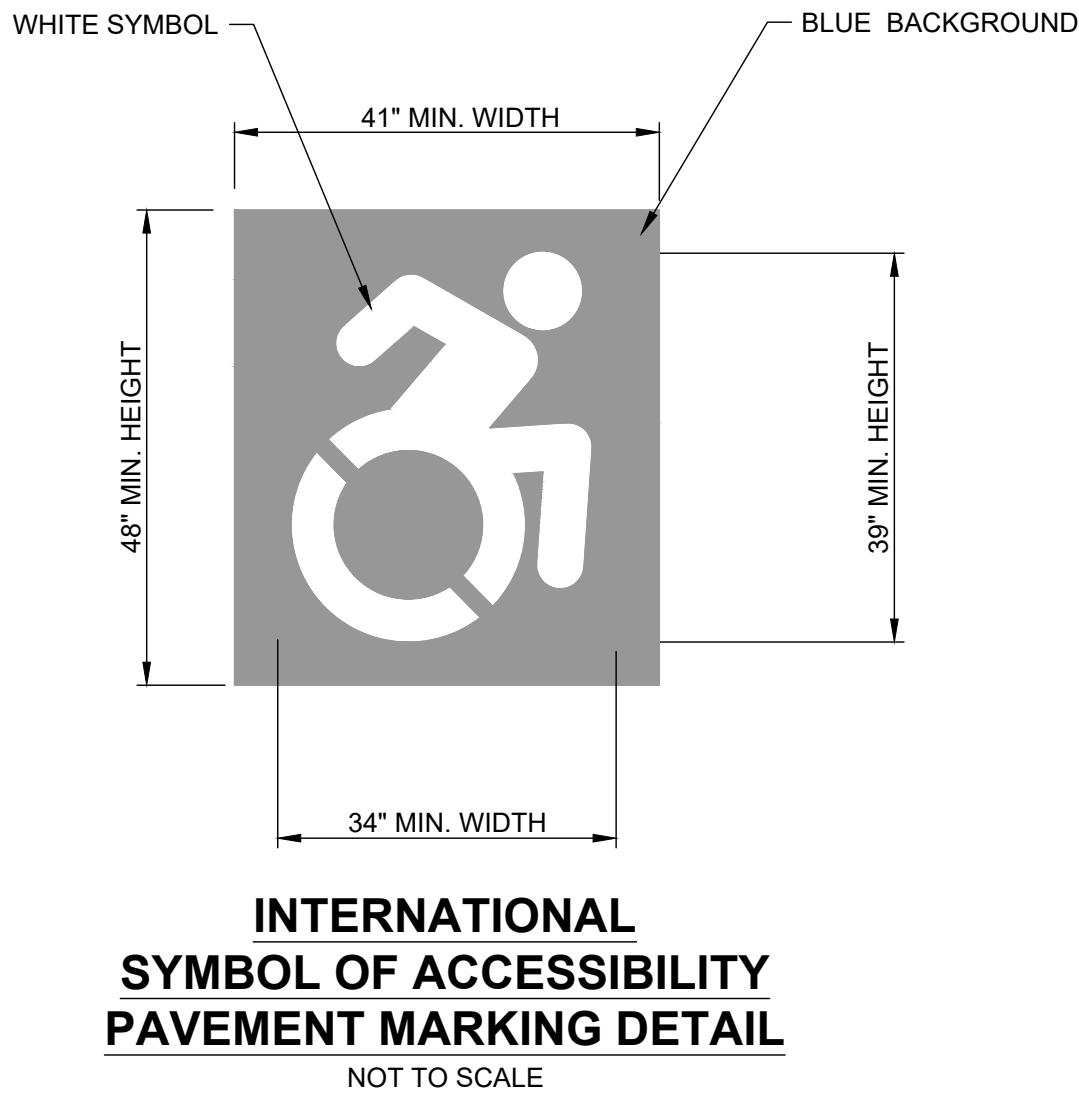
PROPOSED MINOR GRADING CONTOUR

x^P XX.XX

PROPOSED GRADE

PAVEMENT MARKING LEGEND

LAYOUT	TYPE
	DOTTED LINE (WHITE) DOTTED LINE (YELLOW)
	BROKEN LINE (WHITE) BROKEN LINE (YELLOW)
	CROSSHATCHING (WHITE) CROSSHATCHING (YELLOW)
	FULL BARRIER (YELLOW) PARTIAL BARRIER (YELLOW)
	LANE LINE (WHITE)
	EDGE LINE (WHITE) EDGE LINE (YELLOW)
	CHANNELIZING (WHITE) CHANNELIZING (YELLOW)
	STOP LINE (WHITE)
	CROSSWALK (WHITE) W / LADDER
	CROSSWALK (WHITE)



NOTES:

1. THE CONTRACTOR SHALL REMOVE ANY AND ALL EXISTING CONFLICTING PAVEMENT MARKINGS OR AS DETERMINED BY THE ENGINEER IN CHARGE OF INSPECTION. PAYMENT FOR THIS WORK SHALL BE INCLUDED IN VARIOUS ITEMS WITHIN THE CONTRACT.

PLOT: 230504-12:57 | DIR: G:\PROJECTS\1831\HIGHWAY\1831_GP_DWG_PMP-1 | DST: ROADWAY (PDF).PC3 | PST: _ROADWAY - STANDARD.CTB | PSL@ 1:1 | BY: ZT

2	11-1-2022	REVISION PER ZBA, PLANNING & HIGHWAY REVIEW/REVISION	JD
1	3-9-2022	UPDATED AS PER TOB PLANNING COMMENTS	KVH
No.	DATE	REVISION	BY:

SEAL:	

THIS DOCUMENT IS THE SOLE PROPERTY OF N&P ENGINEERS & SURVEYORS, PLLC, AND HAS BEEN PREPARED AND DISSEMINATED FOR THE SOLE USE OF OUR CLIENT. THIS DOCUMENT AND ANY DATA, CALCULATIONS, ESTIMATES OR - DEPICTIONS - CONTAINED HEREIN, MAY NOT BE UTILIZED BY ANY THIRD-PARTY WITHOUT PRIOR WRITTEN CONSENT OF N&P ENGINEERS & SURVEYORS, PLLC, WHICH ASSUMES NO RISK OF LOSS OR LIABILITY RESULTING FROM ANY UNAUTHORIZED USE OR RELIANCE BY ANY THIRD-PARTY.

CONSULTANT:

NELSON + POPE
engineers • architects • surveyors
70 Maxess Road, Melville, NY 11747 • 631.427.5665 • nelsonpoppe.com

CLIENT:

BROOKHAVEN FREE LIBRARY
273 BEAVER DAM ROAD
BROOKHAVEN, NEW YORK 11719

DWN BY:	JD/dsd
CHK'D BY:	JD/EM
DATE:	MARCH 2021
JOB No.:	18311
CADD:	18311_GP.DWG
SCALE:	AS SHOWN

DRAWING TITLE:

PAVEMENT MARKING PLAN - 1

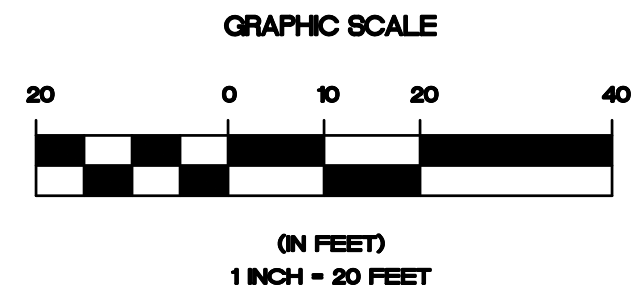
BROOKHAVEN FREE LIBRARY
BROOKHAVEN, NEW YORK 11719

DRAWING NUMBER:

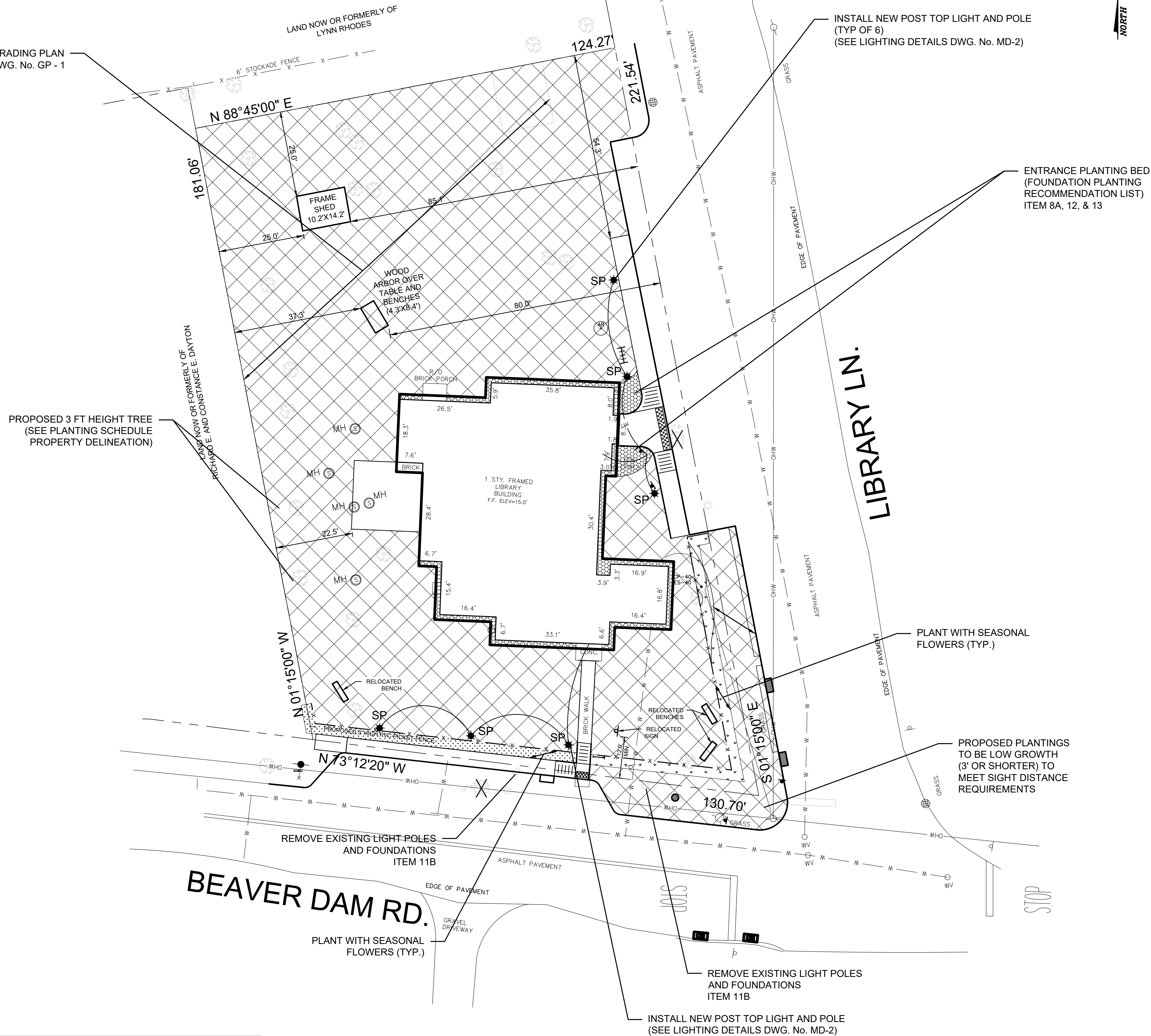
PMP - 1

SHEET: 12 OF 13

PLANTING SCHEDULE PROPERTY DELINEATION						
QTY	I.D.	BOTANICAL NAME	COMMON NAME	SIZE	SPACING	ITEM No.
12	KL	KALMIA LATIFOLIA	MOUNTAIN LAUREL	5' HEIGHT AT 5' SPACING	48" O.C.	14
12	MP	MYRIC PENNSYLVANICA	NORTHERN BAYBERRY	5' HEIGHT AT 5' SPACING	48" O.C.	14
-	PJ	PIERIS JAPONICA COMPACTA	JAPANESE ADROMEDA	3' HEIGHT AT 5' SPACING	48" O.C.	14
2	AR	ACER RUBRUM	RED MAPLE	2 -3" CAL.	30' O.C.	15




SEE GRADING PLAN
DWG. No. GP - 1



NOTES:

1. SEASONAL PLANTINGS TO BE PLACED ALONG FENCELINE. AT NO TIME SHALL PLANTS NEWLY INSTALLED OR PLANTS TO REMAIN BE HIGHER THAN 2'-6" IN EHGHT. ONLY LOW GROWTH PLANTS SHALL BE PLACED IN THIS AREA.

FOUNDATION PLANTINGS - RECOMMENDATION LIST						
PERENNIALS						
QTY	DESCRIPTION	BOTANICAL NAME	COMMON NAME	SIZE	ITEM NO.	
25	UNIVER ASSORTMENT IN TREES & SHORTER PLANTS IN FRONT OF PLANTING BED SPACING 18" MAX	Aster cordifolius	Blue Wood-Aster	PINT	12	
25		Agastache foeniculum	Anise Hyssop	PINT	12	
25		Baptisia australis	False Blue Indigo	PINT	12	
25		Echinacea purpurea	Purple Coneflower	PINT	12	
25		Geranium maculatum	Wild Geranium	PINT	12	
25		Panicum virgatum 'Shanandoah'	Switchgrass	PINT	12	
25		Penstemon digitalis	Smooth Penstemon	PINT	12	
25		Rudbeckia fulgida	Black-eyed Susan	PINT	12	
		SHRUBS				
3			Ceanothus americanus	New Jersey Tea	1 GAL	13
3		Ilex glabra	Inkberry Holly	1 GAL	13	
3		Itea virginica 'Henry's Garnet'	Virginia Sweetspire	1 GAL	13	

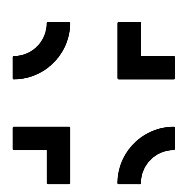
(b)(1) LUMINAIRE SCHEDULE							
TYP	SYMBOL	DESCRIPTION	LAMP	LUMENS	MOUNTING/BALLAST	LLF	QTY
SP		DOVER LED 55021CDBZ	12 Watt LED	840	6' Pole Cat.# SMA 06 F4C 09S C03	0.90	6

3	5-1-2023	REVISED PER HW COMMENT	Z1/D
2	11-1-2022	REVISION PER ZBA, PLANNING & HIGHWAY REVIEW/APPROVAL	JD
1	3-9-2022	UPDATED AS PER TOB PLANNING COMMENTS	KVH
No.	DATE	REVISION	BY:

SEAL:

THIS DOCUMENT IS THE SOLE PROPERTY OF N&P ENGINEERS & SURVEYORS, PLLC, AND HAS BEEN PREPARED AND DISSEMINATED FOR THE SOLE USE OF OUR CLIENT. THIS DOCUMENT AND ANY DATA, CALCULATIONS, ESTIMATES OR DEPICTIONS CONTAINED HEREIN, MAY NOT BE UTILIZED BY ANY THIRD-PARTY WITHOUT PRIOR WRITTEN CONSENT OF N&P ENGINEERS & SURVEYORS, PLLC, WHICH ASSUMES NO RISK OF LOSS OR LIABILITY RESULTING FROM ANY UNAUTHORIZED USE OR RELIANCE BY ANY THIRD-PARTY.

CONSULTANT:



NELSON + POPE

engineers • architects • surveyors

70 Maxess Road, Melville, NY 11747 • 631.427.5665 • nelsonpope.com

CLIENT:

BROOKHAVEN FREE LIBRARY
273 BEAVER DAM ROAD
BROOKHAVEN, NEW YORK 11719

DWN. BY:	JD/dsd
CHK'D BY:	JD/EM
DATE:	MARCH 2021
JOB No.:	18311
CADD:	18311_GP.DWG
SCALE:	AS SHOWN

DRAWING TITLE:

LANDSCAPE & LIGHTING PLAN - 1

BROOKHAVEN FREE LIBRARY
BROOKHAVEN, NEW YORK 11719

DRAWING NUMBER:

LLP - 1

SHEET: 13 OF 13